

CSEM

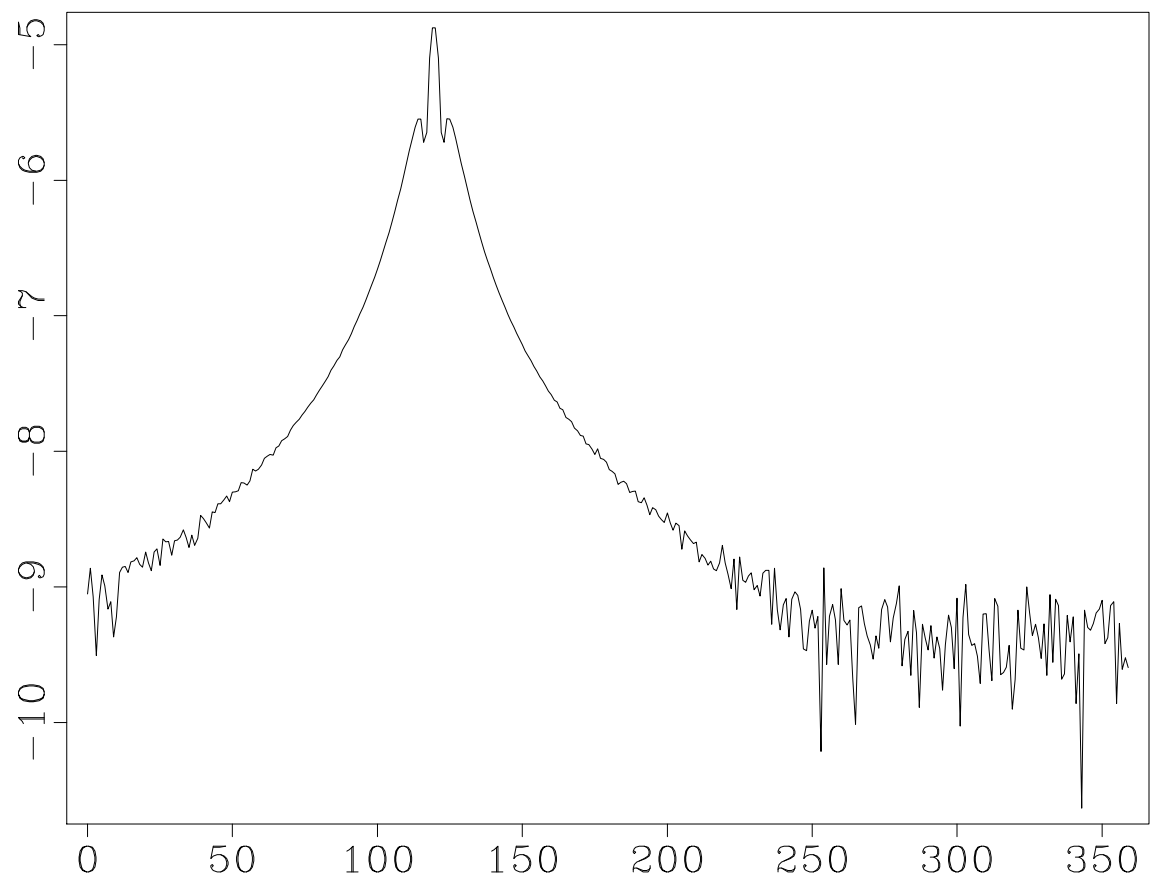


Figure 1: csem/Exmvotsa

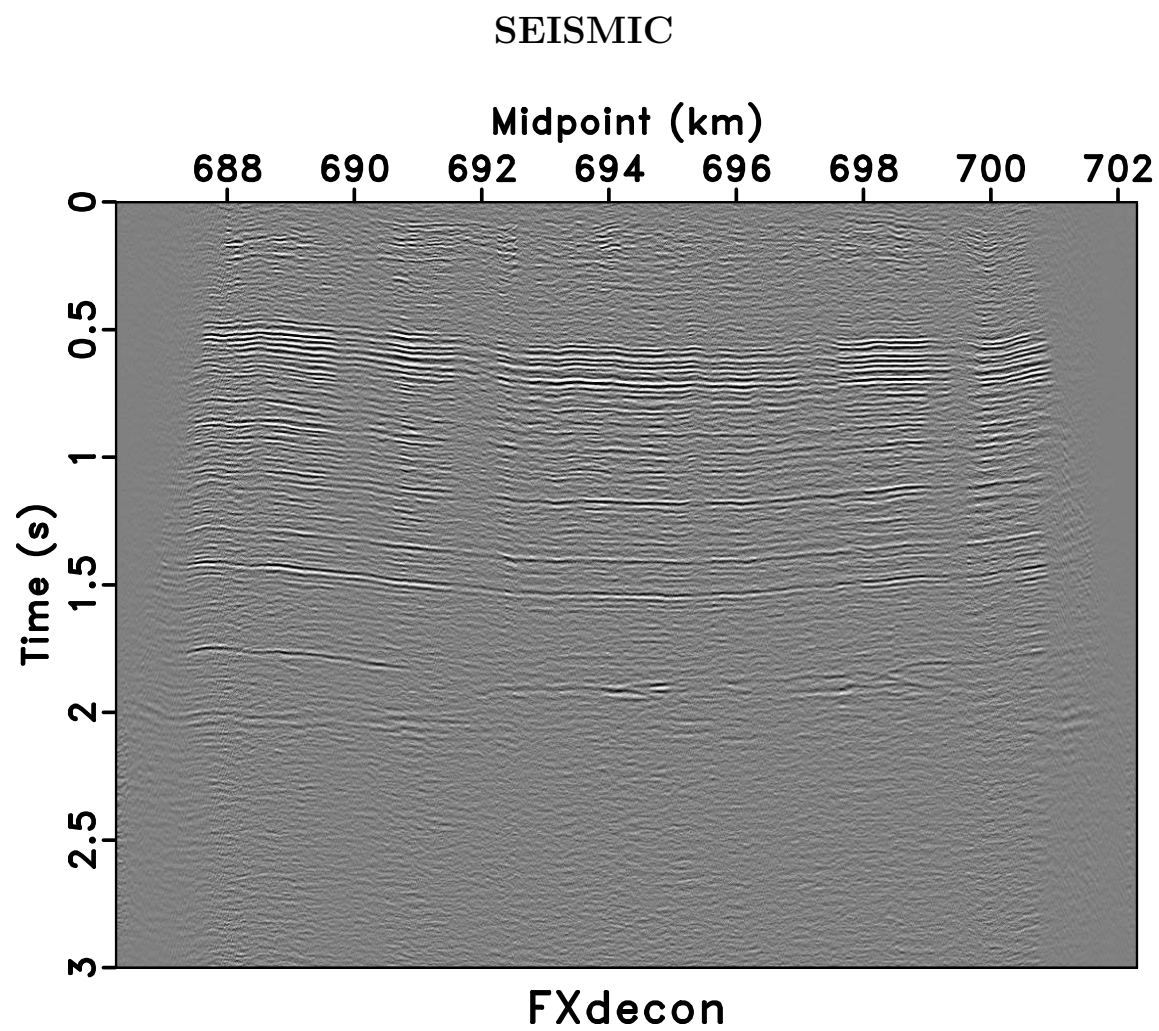


Figure 2: seismic/fxdecon

PYTHON

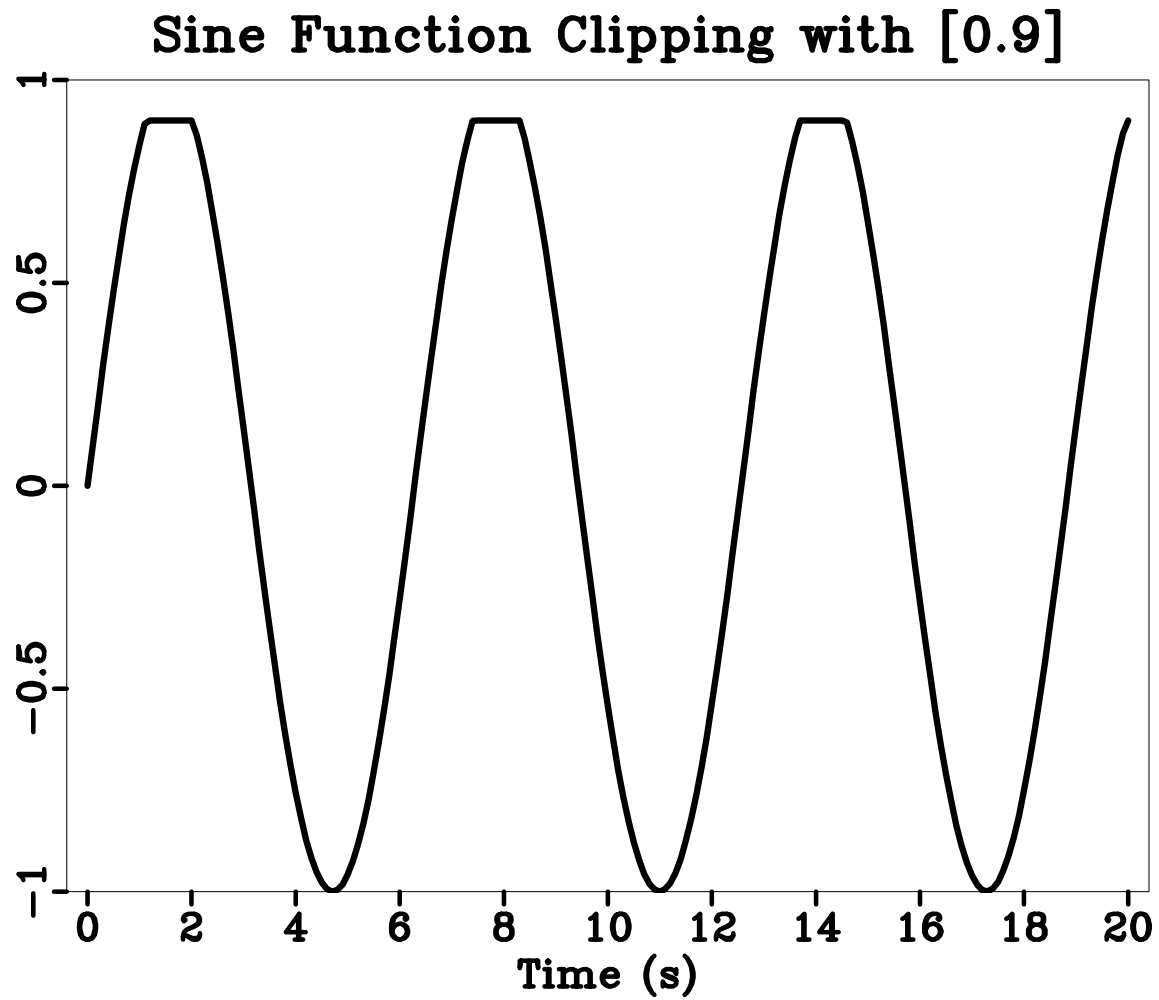


Figure 3: python/clip2

CSEM

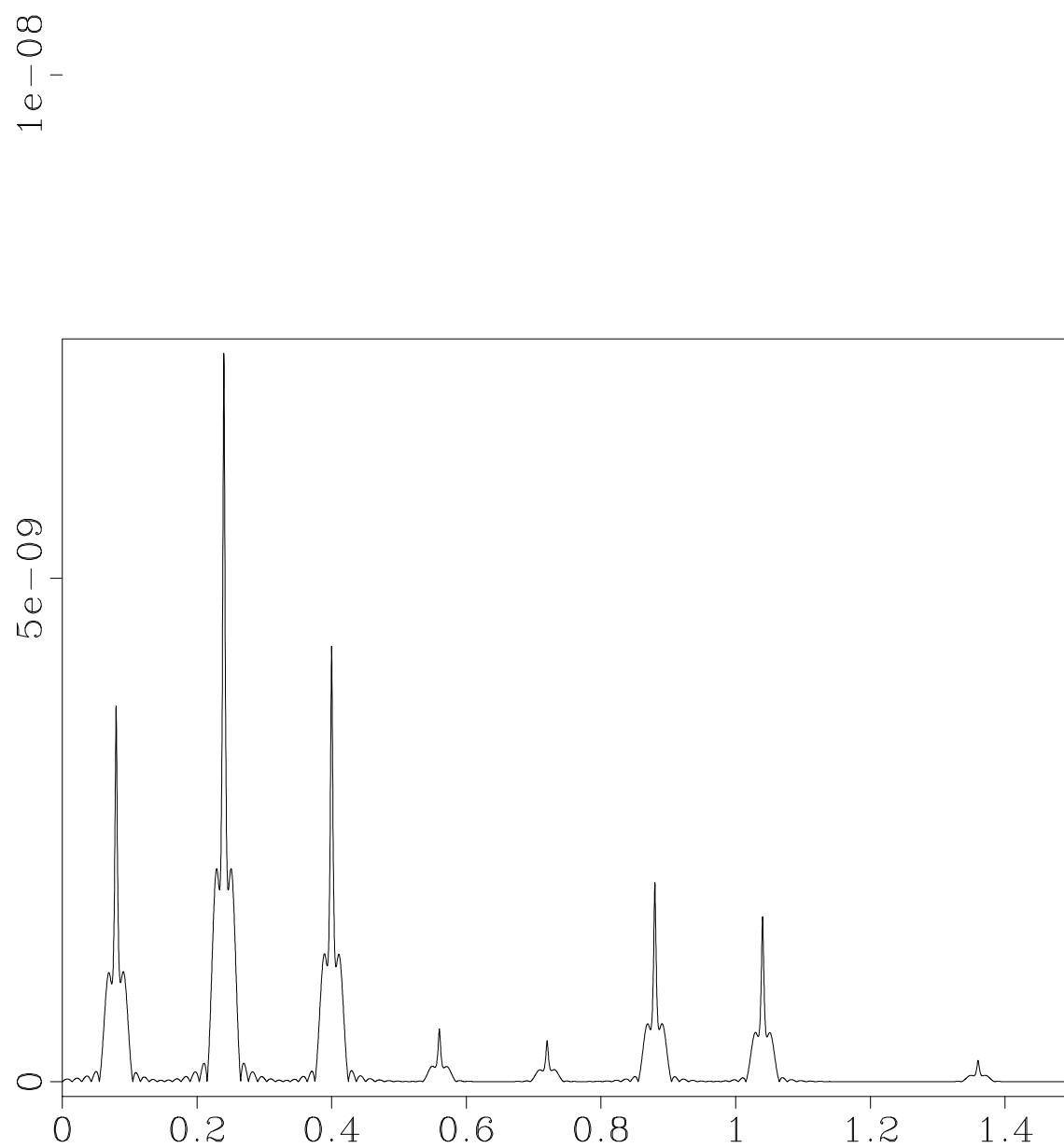
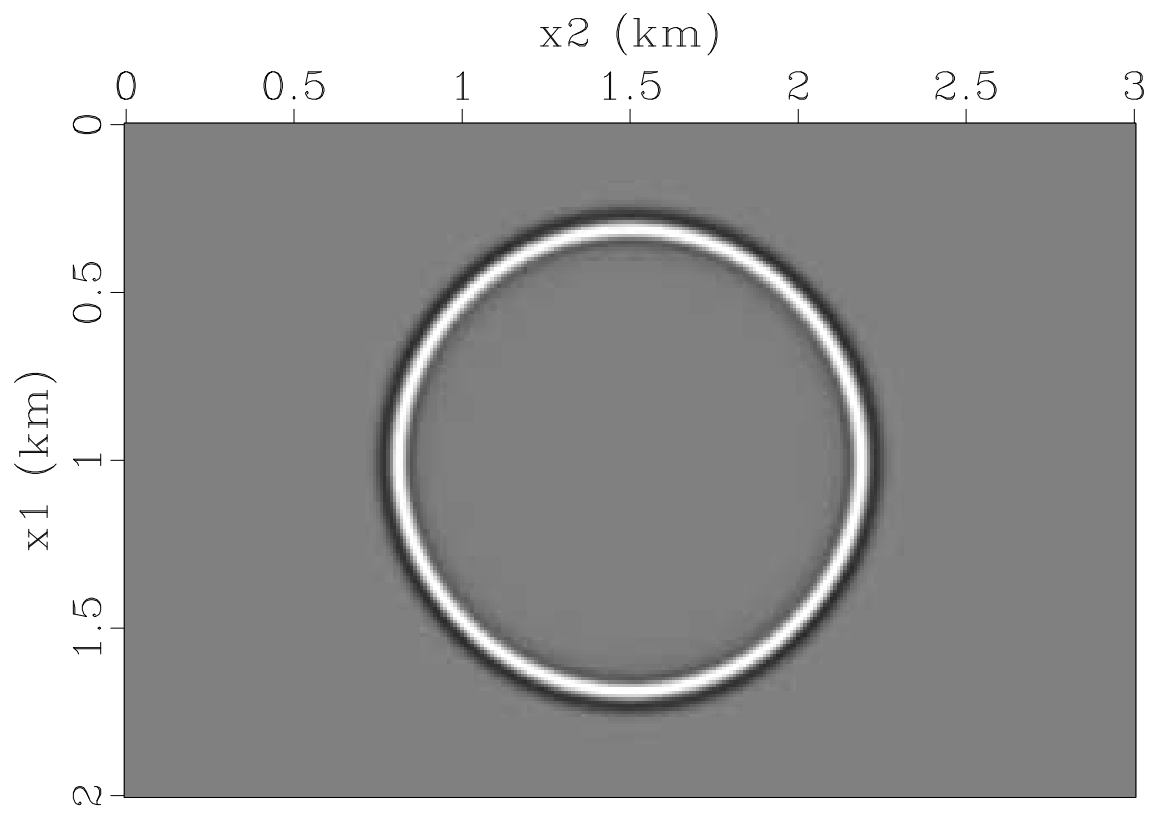


Figure 4: csem/spectra

C

Wave Snapshot

Figure 5: c/wave

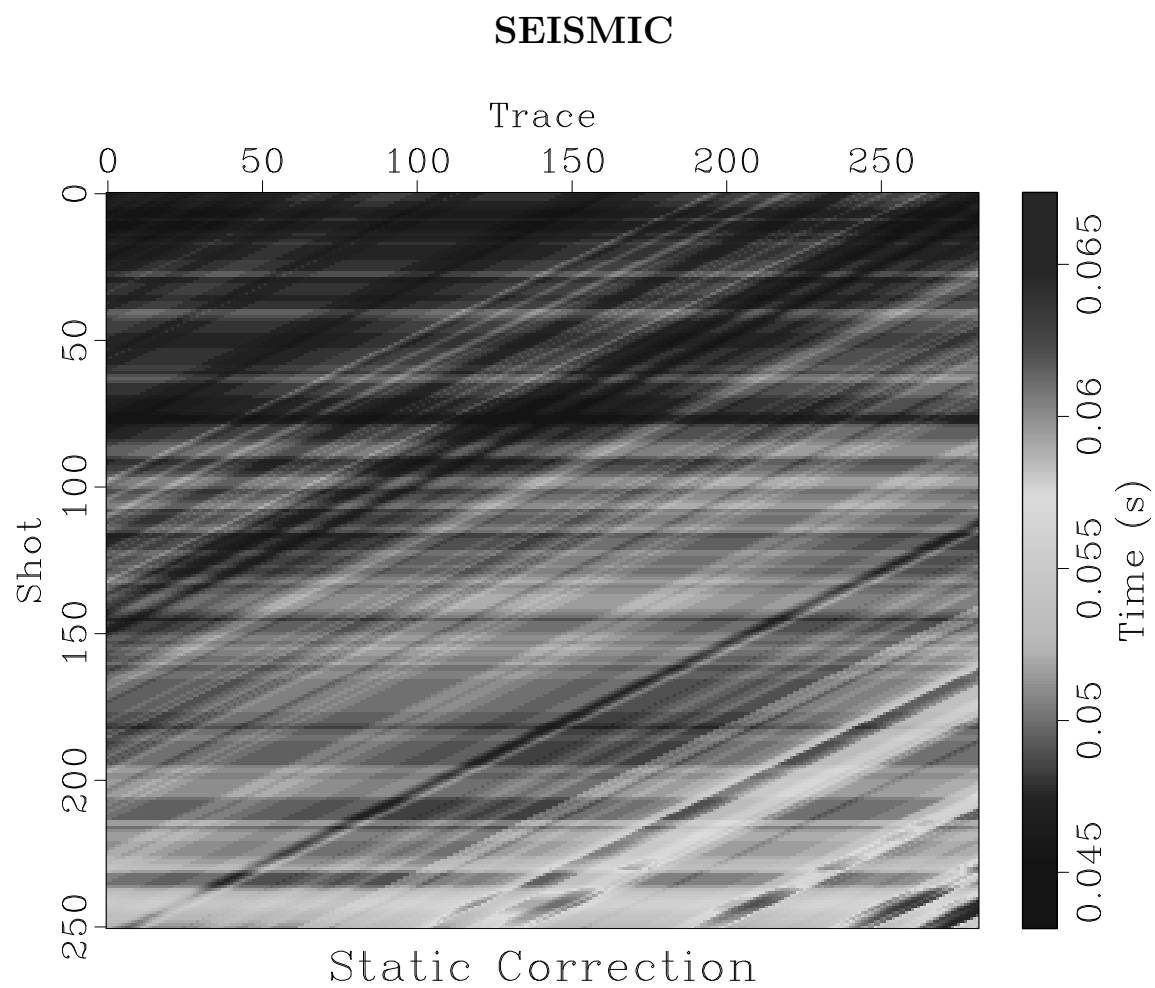


Figure 6: seismic/statics

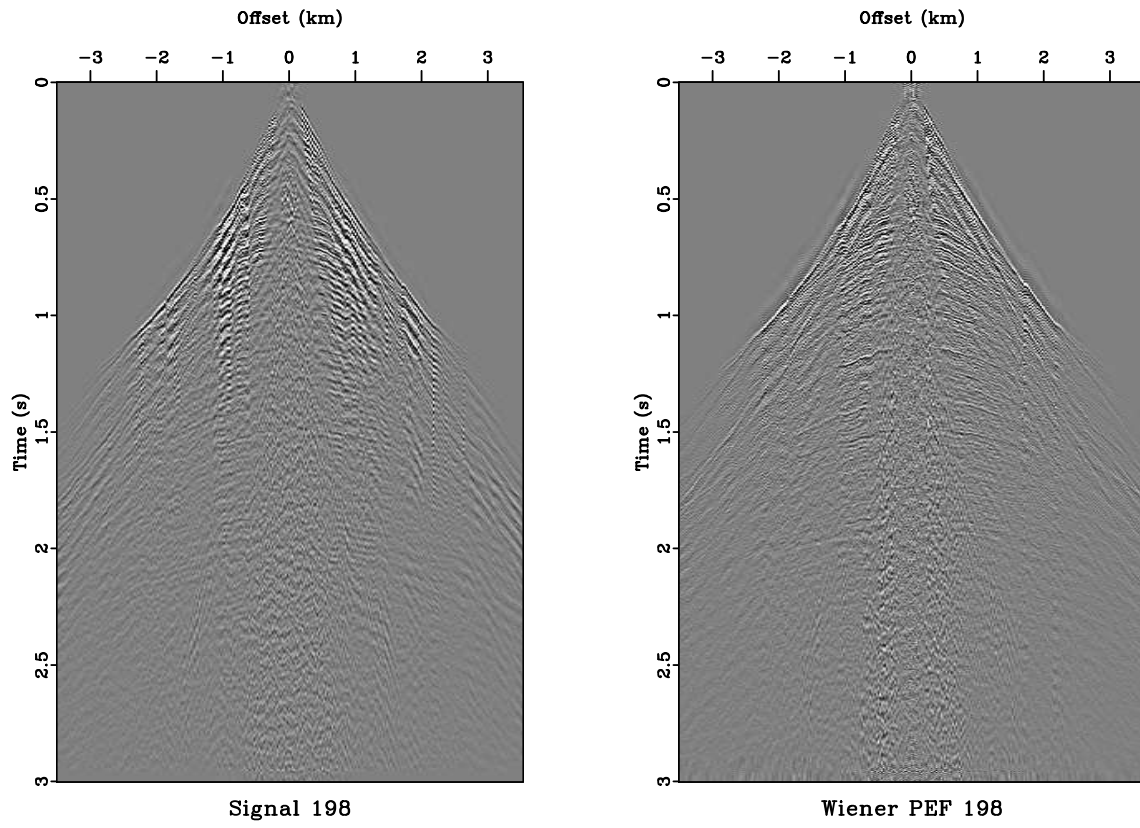


Figure 7: seismic/sd198

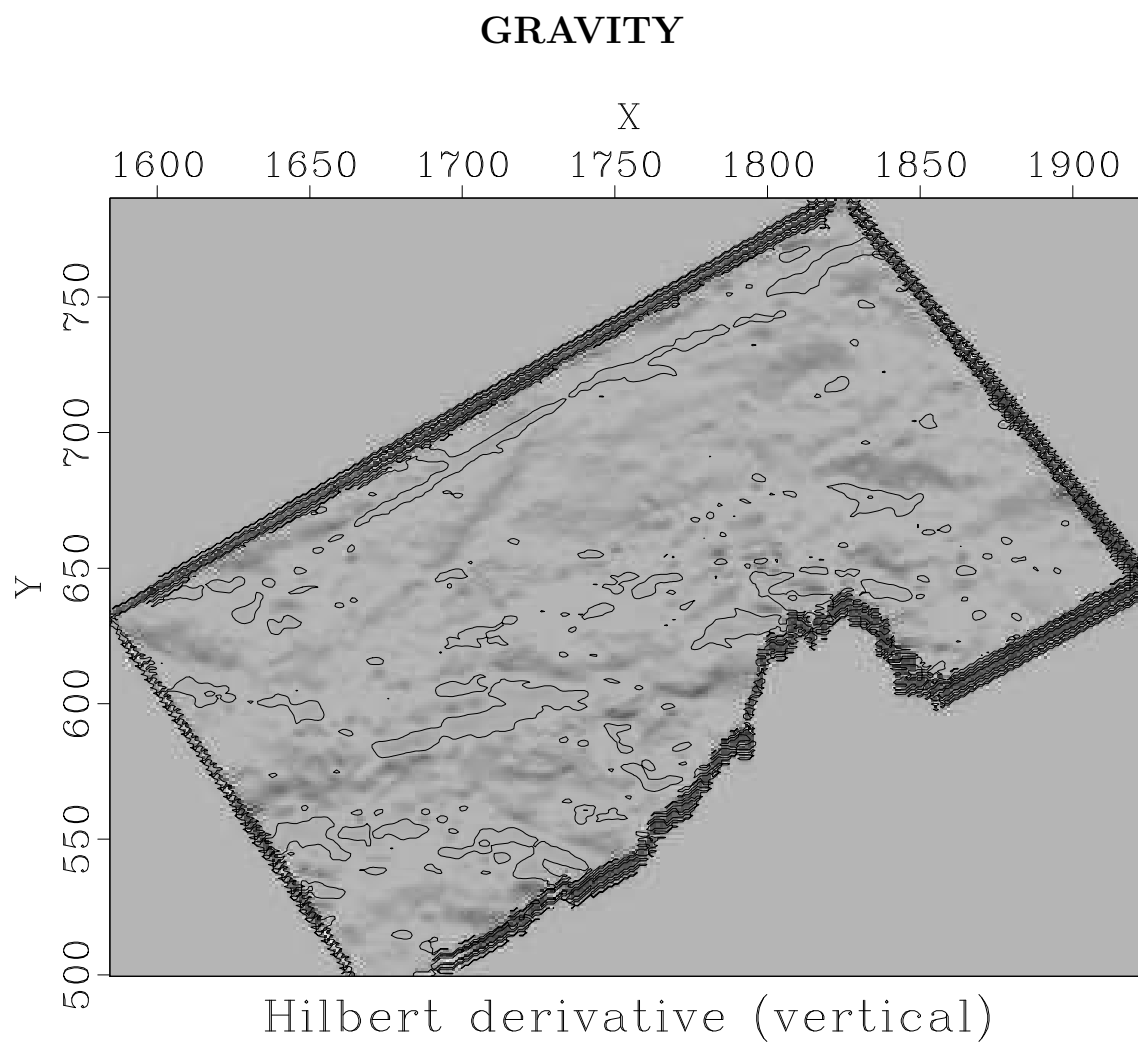


Figure 8: gravity/hxder

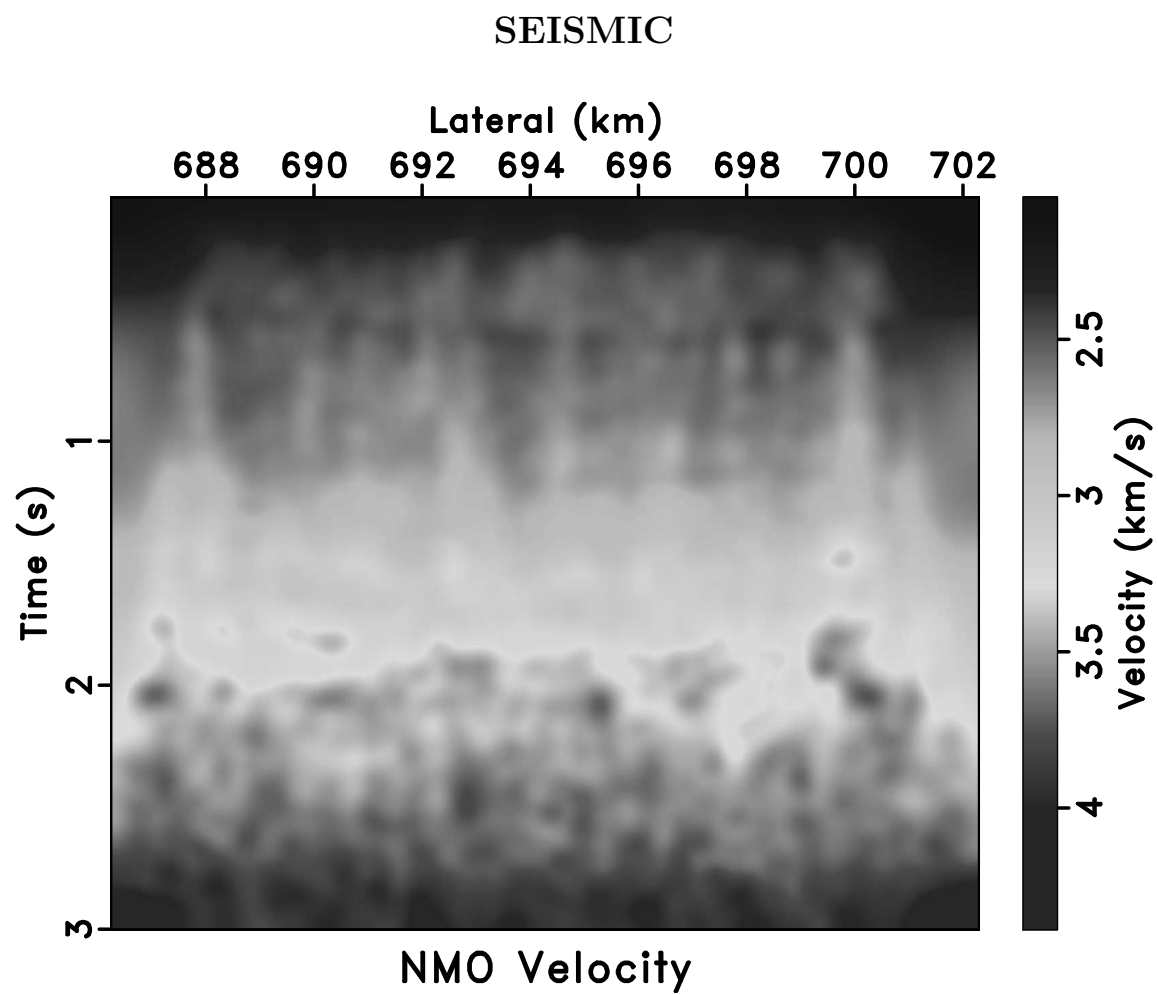


Figure 9: seismic/vel

C++

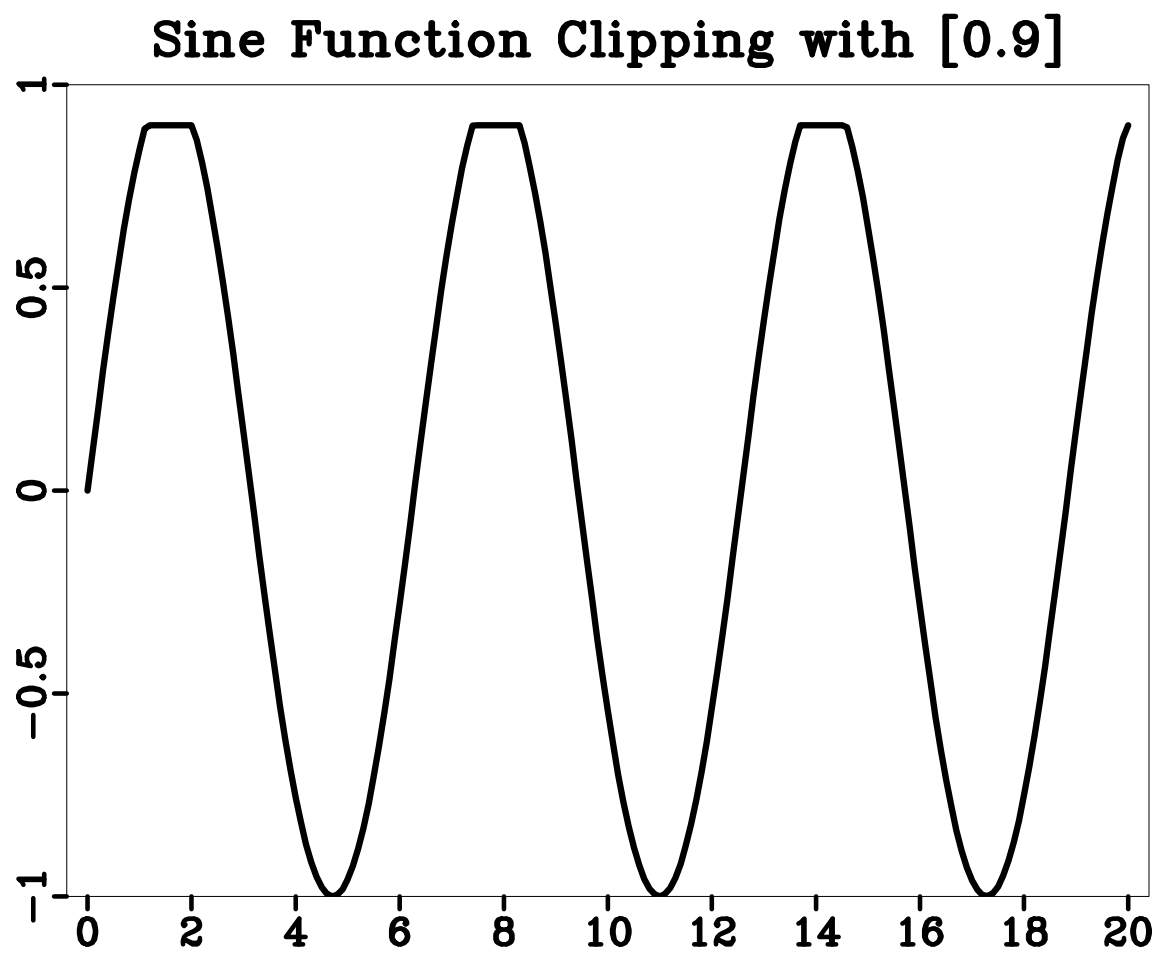


Figure 10: c++/clip2

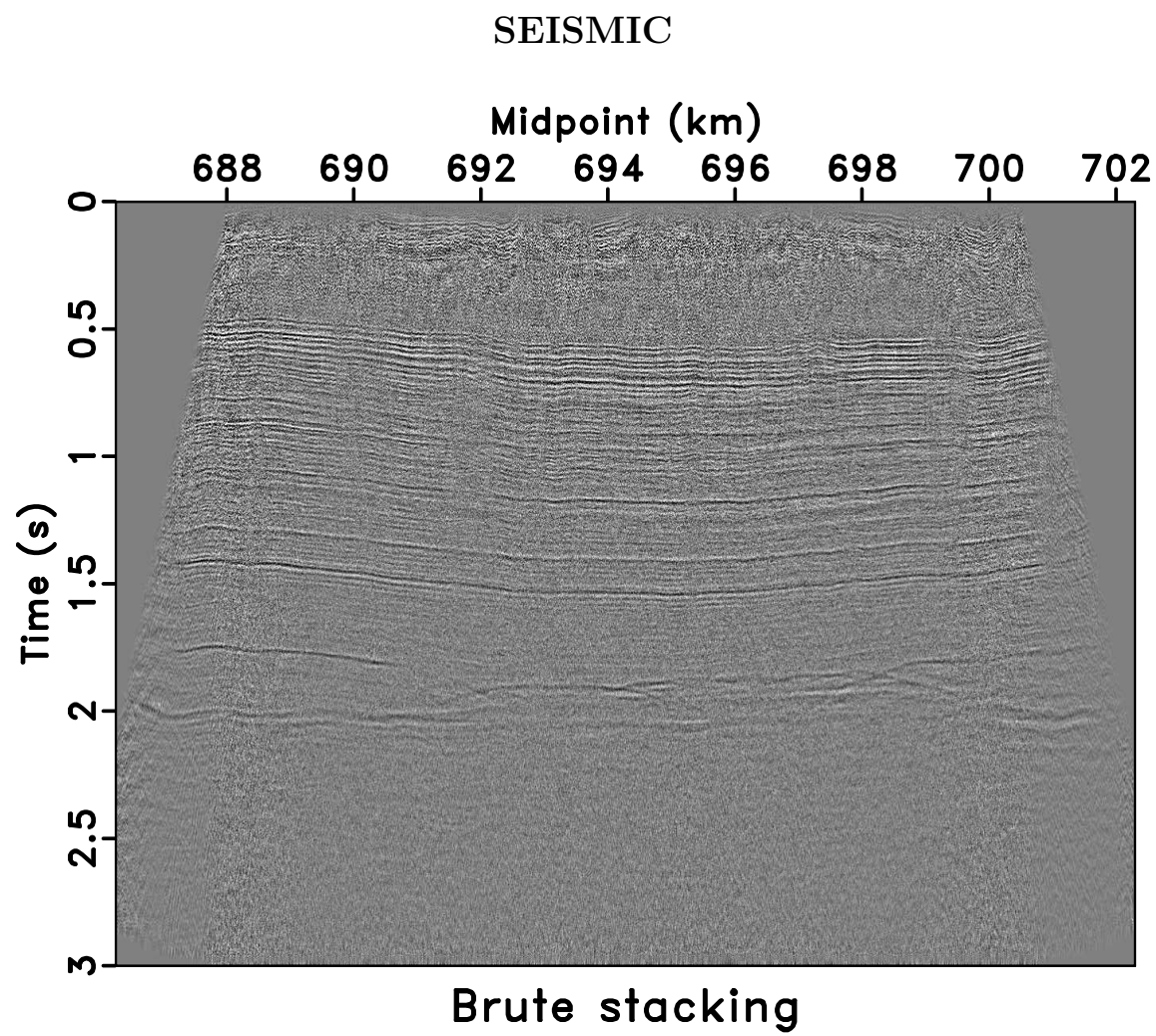


Figure 11: seismic/bstack

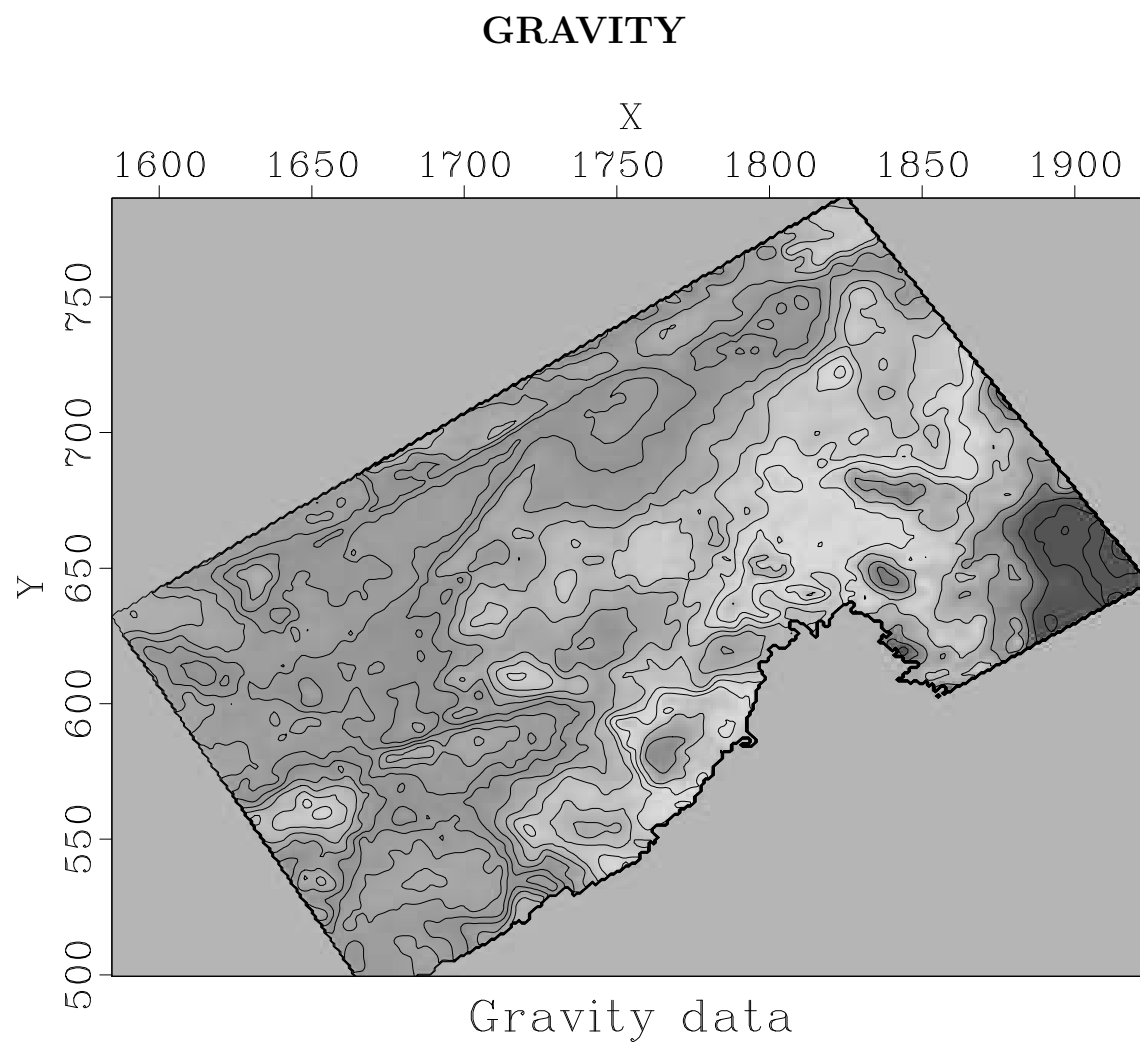


Figure 12: gravity/bin

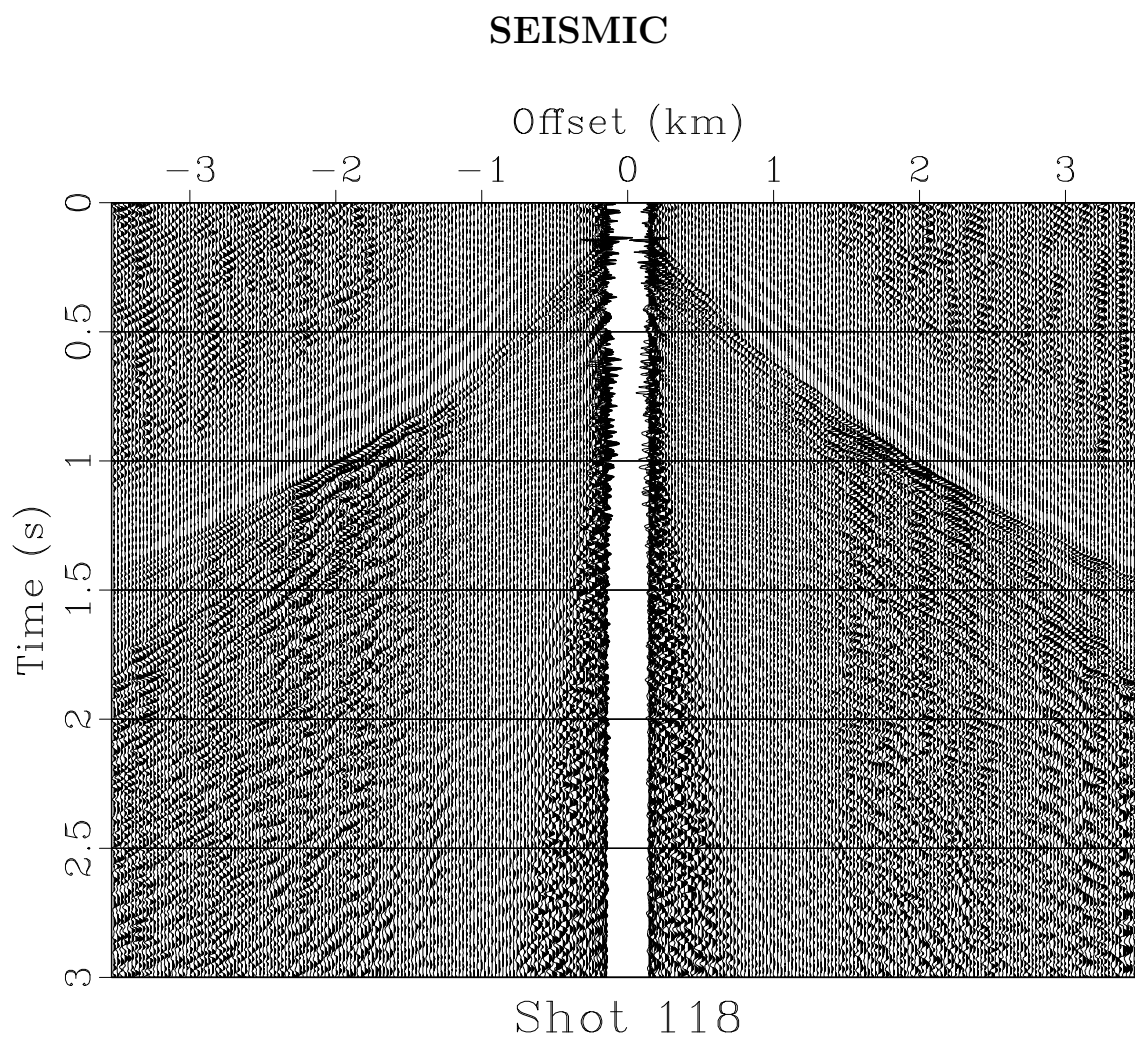
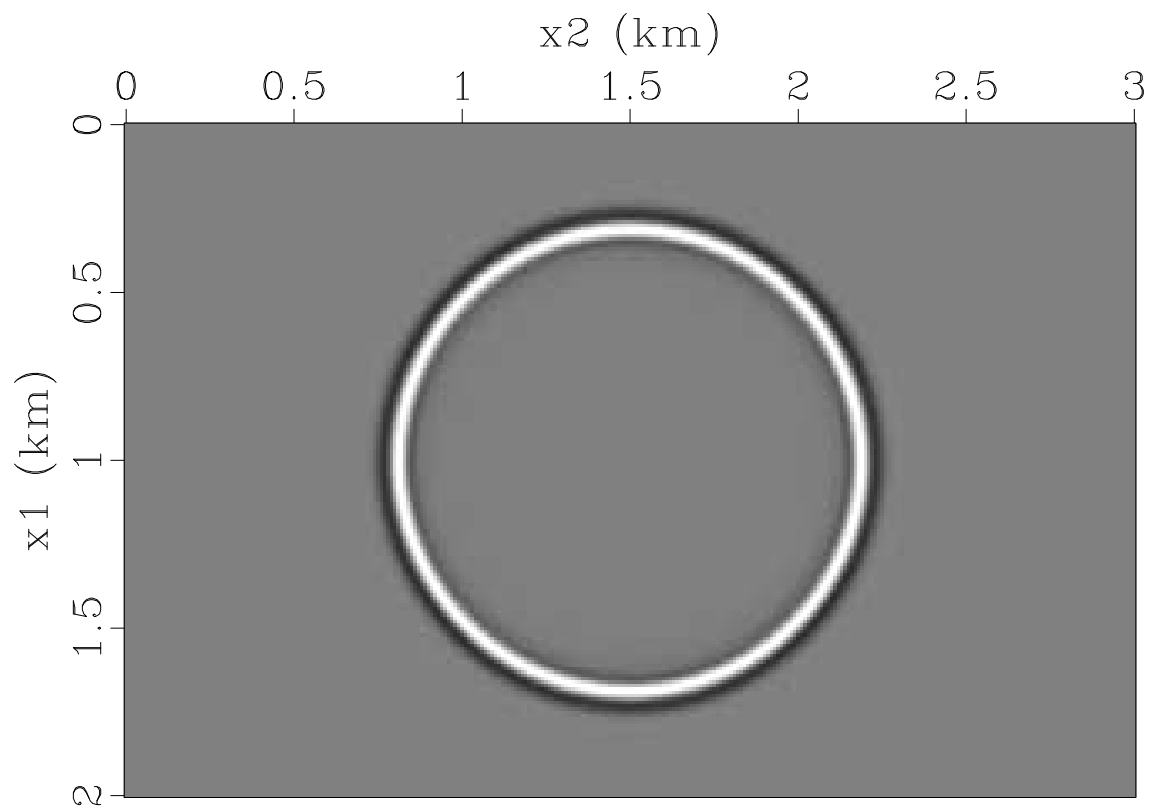


Figure 13: seismic/shot118

F90

Wave Snapshot

Figure 14: f90/wave

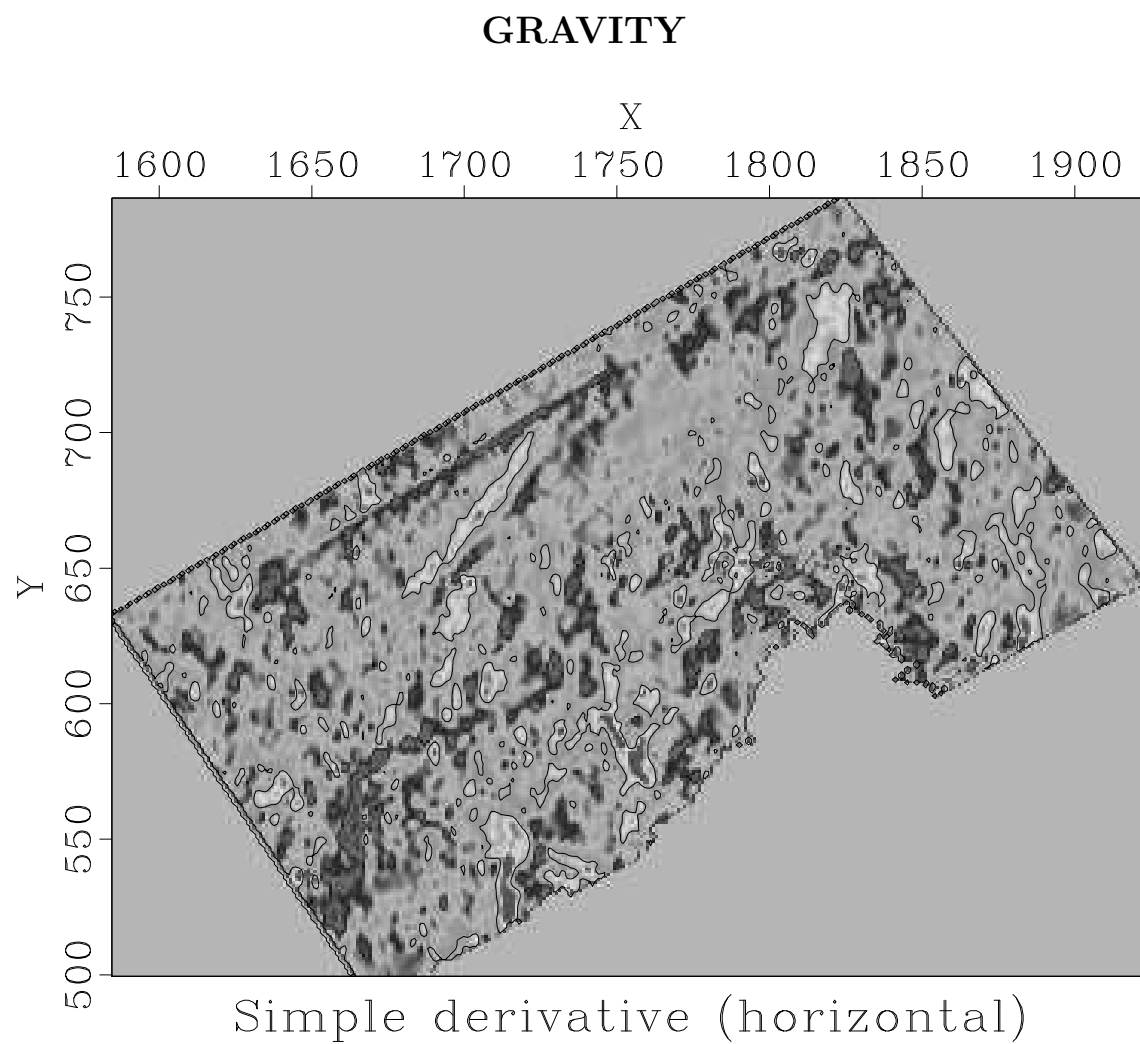


Figure 15: gravity/sxder

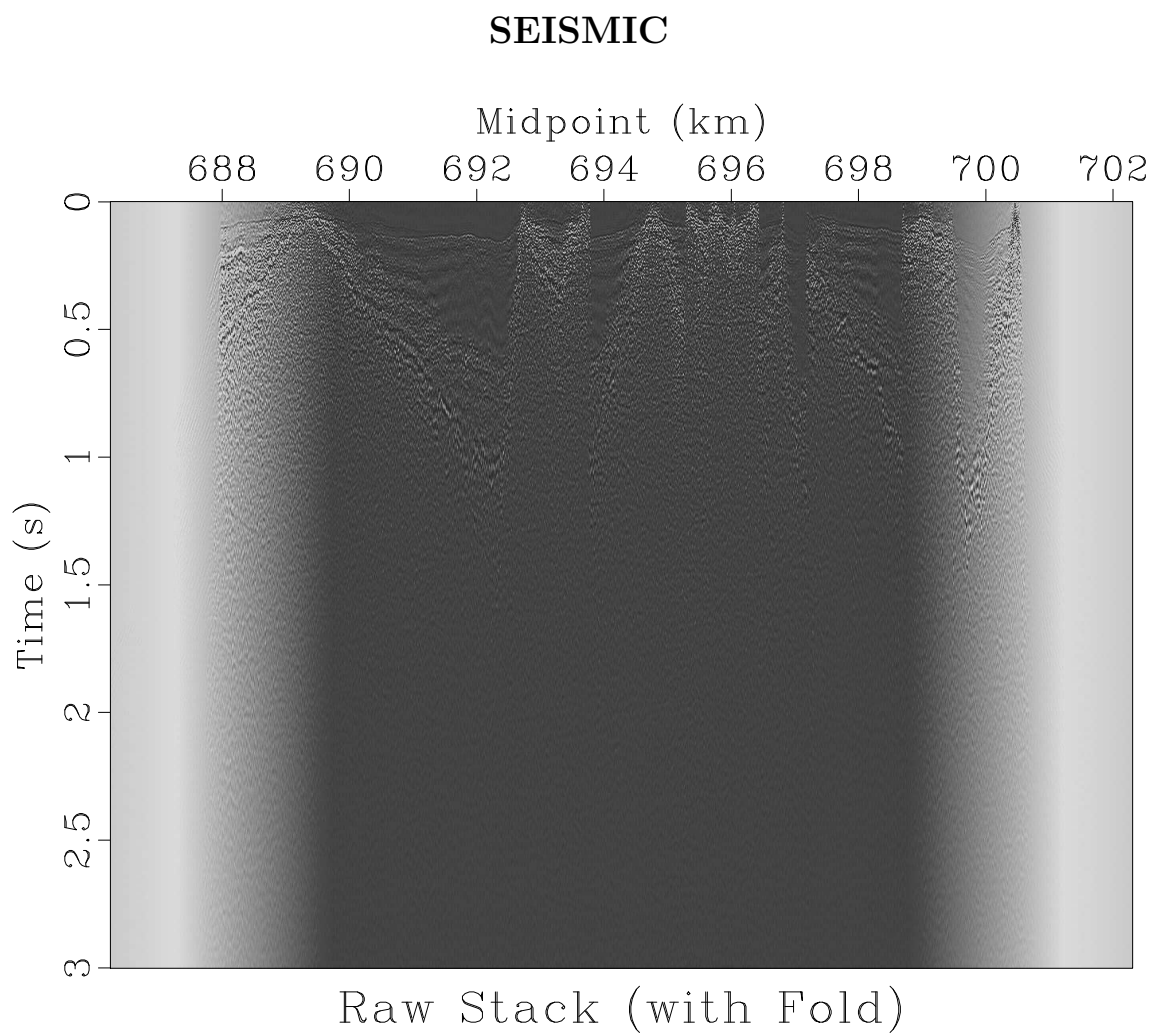
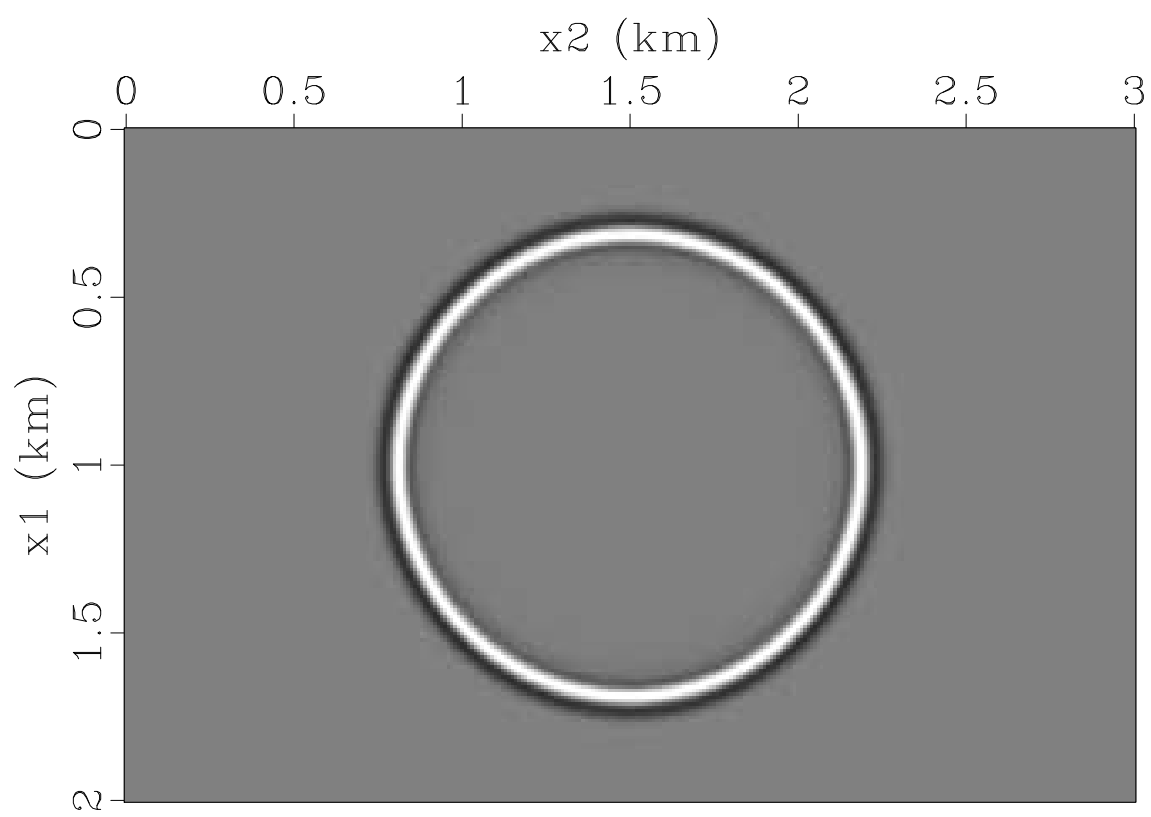


Figure 16: seismic/rstack

C++

Wave Snapshot

Figure 17: c++/wave

SEISMIC

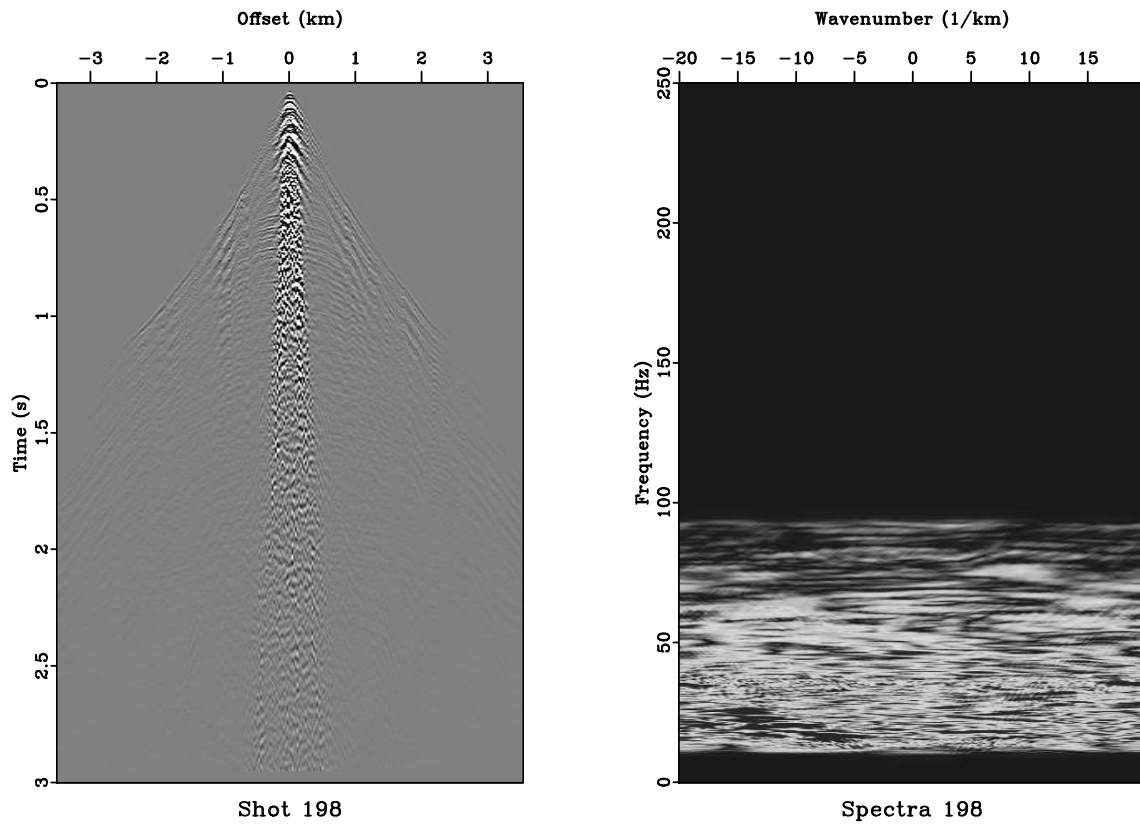
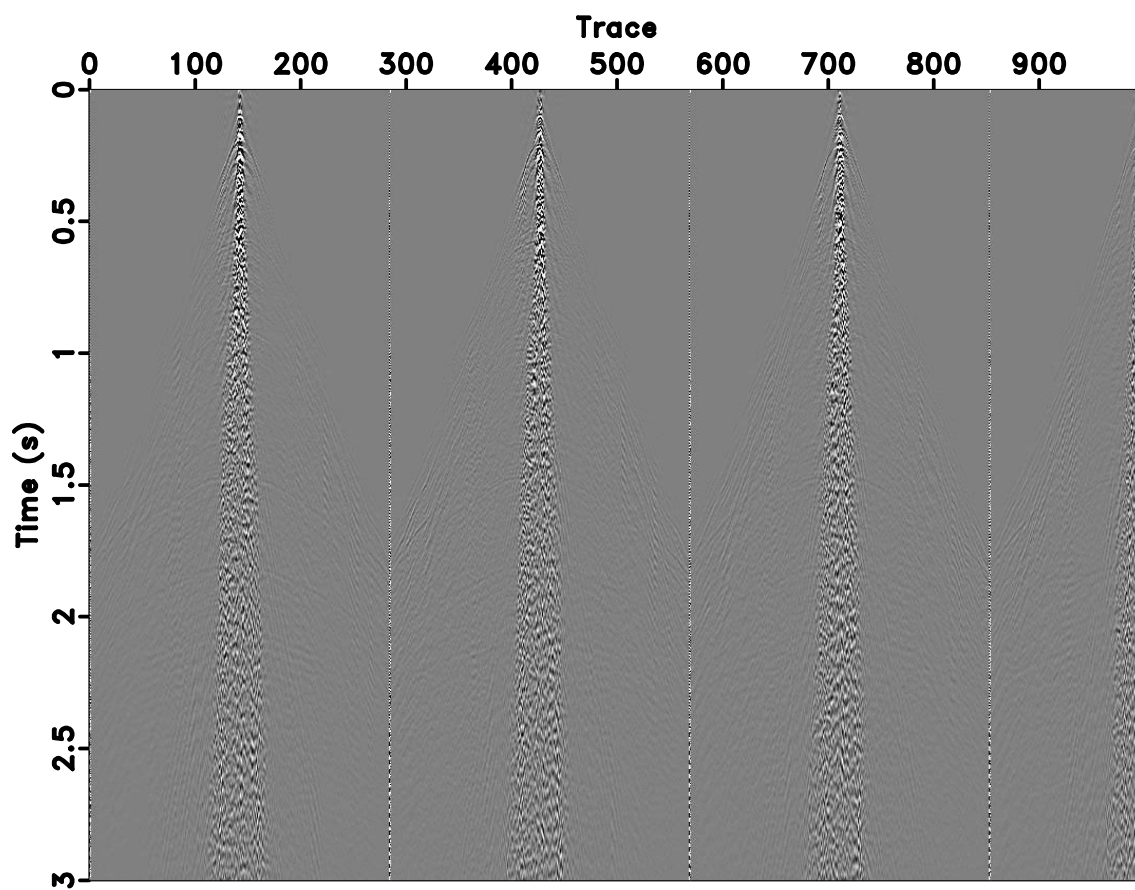


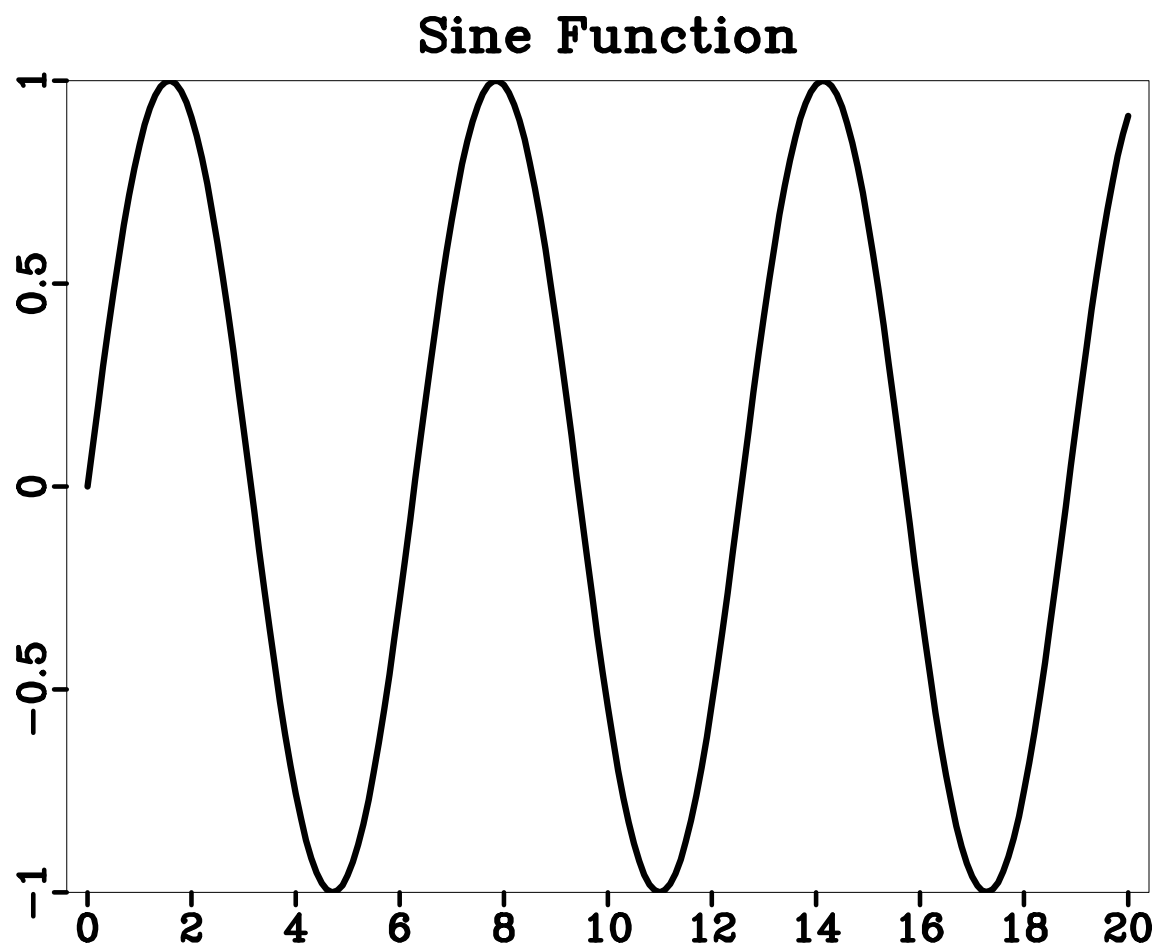
Figure 18: seismic/input198



First 1000 traces

Figure 19: seismic/first

C

Figure 20: c/\sin

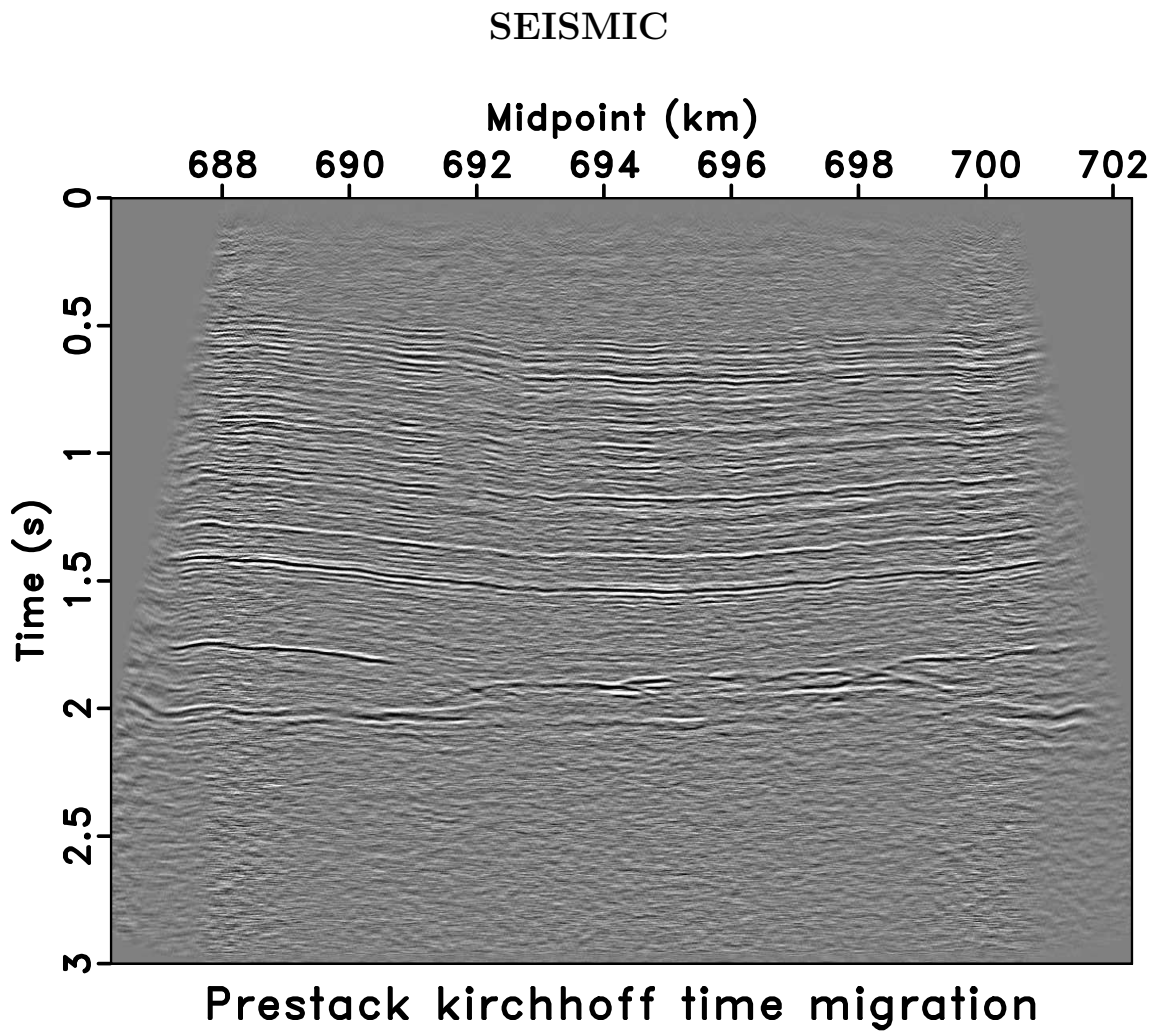


Figure 21: seismic/pstm

C++

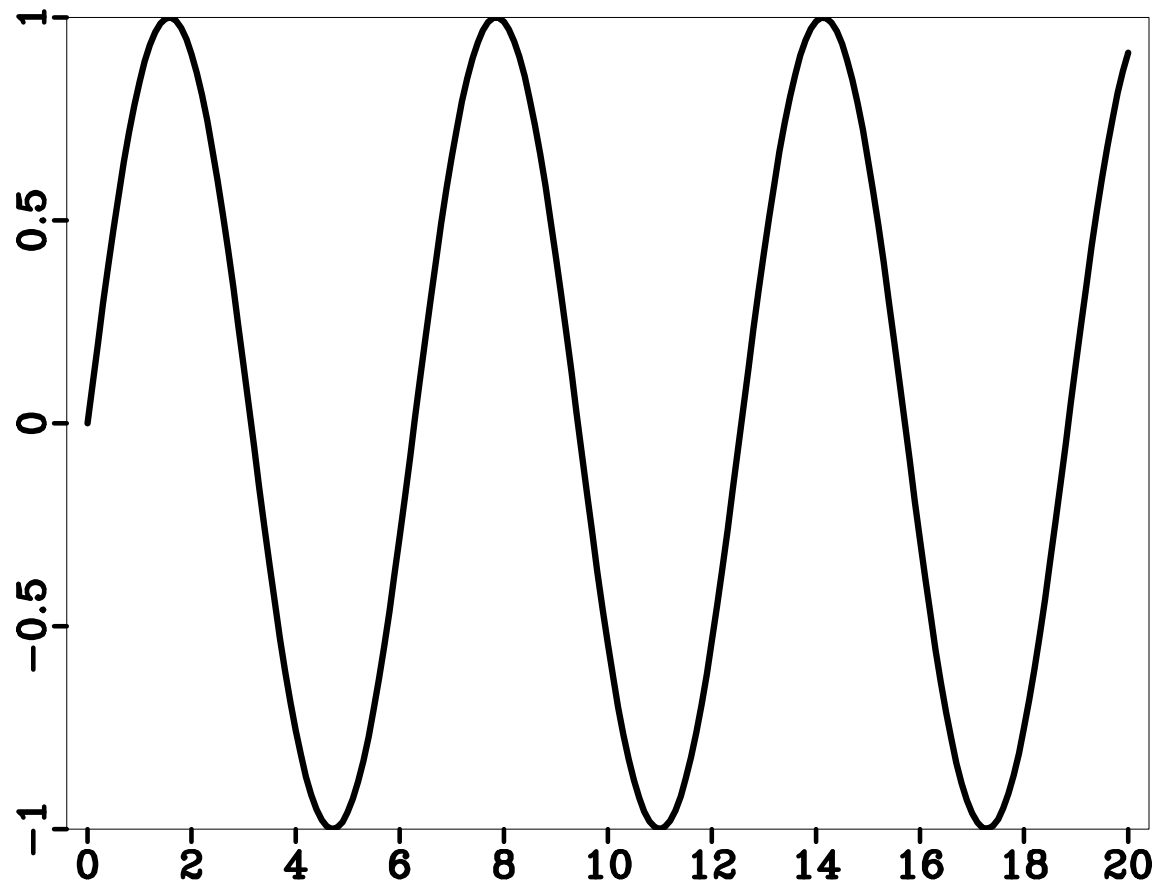
Sine Function

Figure 22: c++/sine

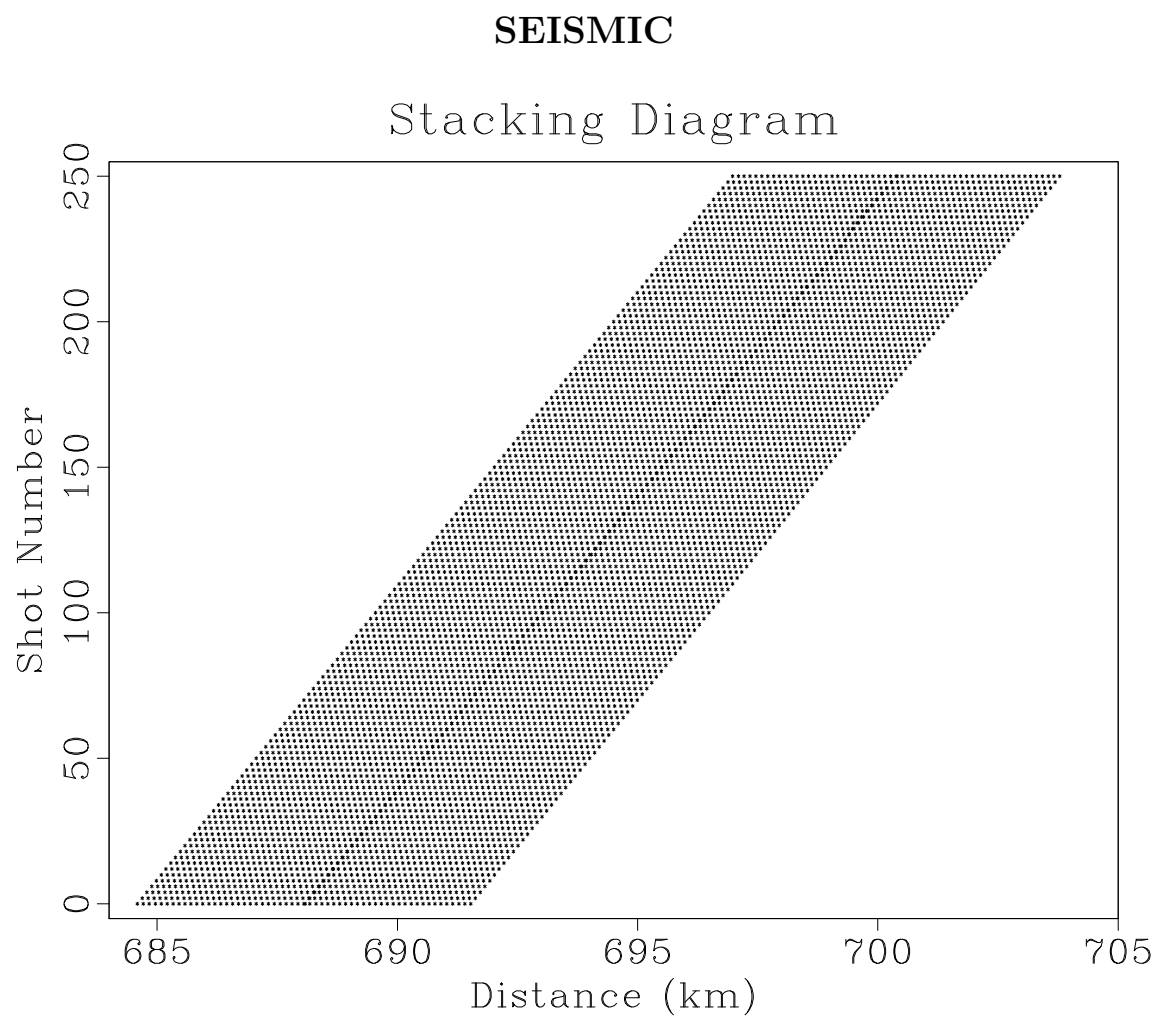


Figure 23: seismic/diagram

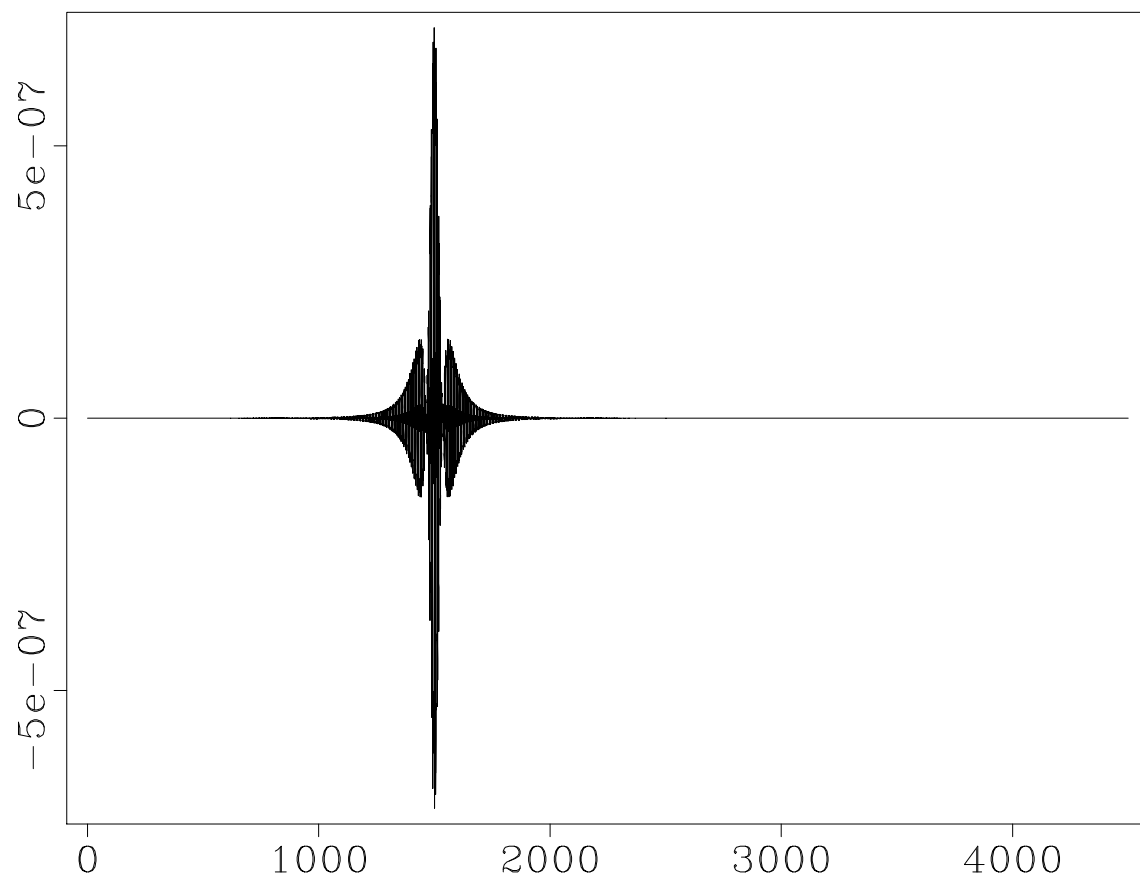
CSEM

Figure 24: csem/tsa

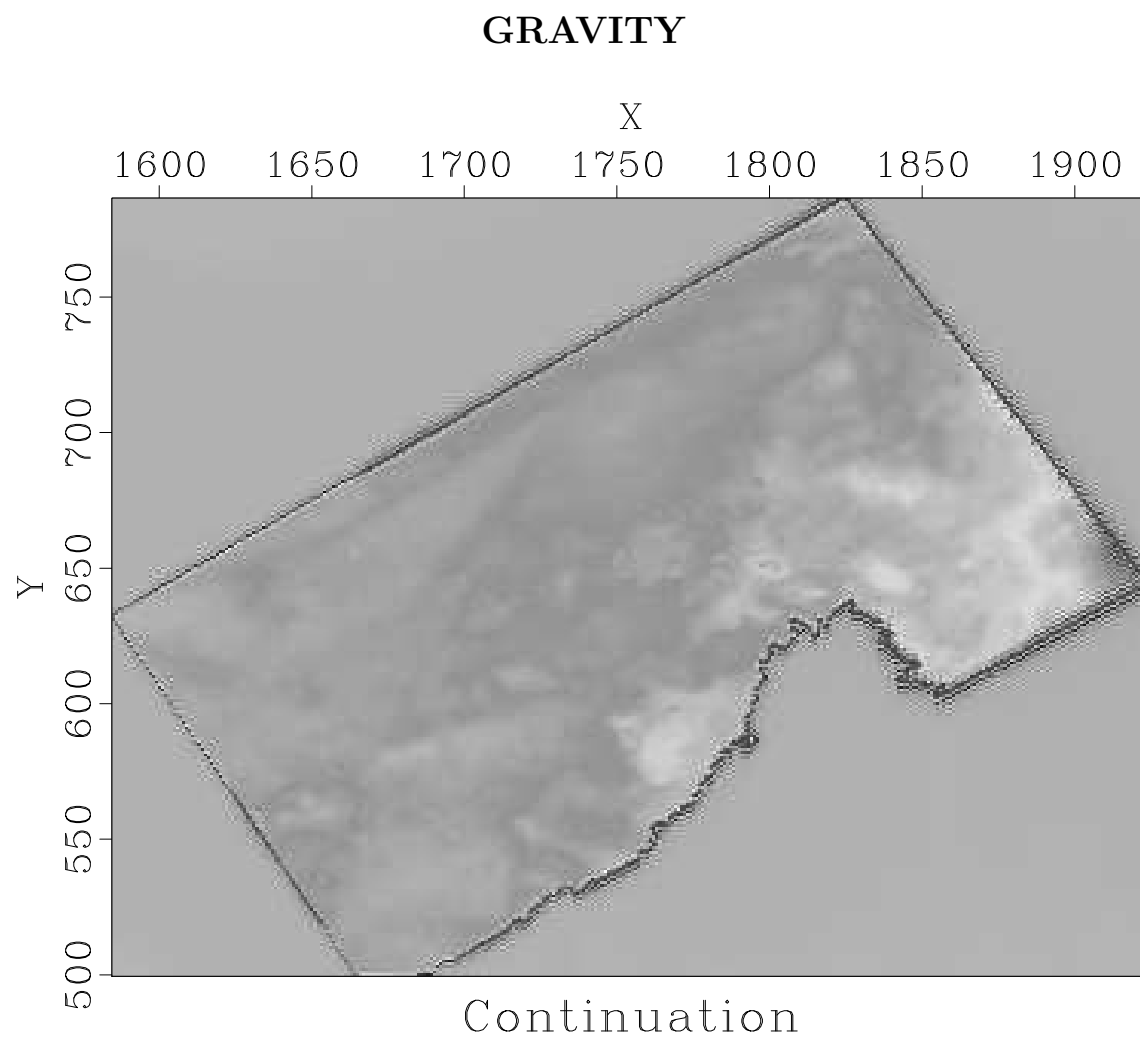


Figure 25: gravity/cont

SEISMIC

Transfer function

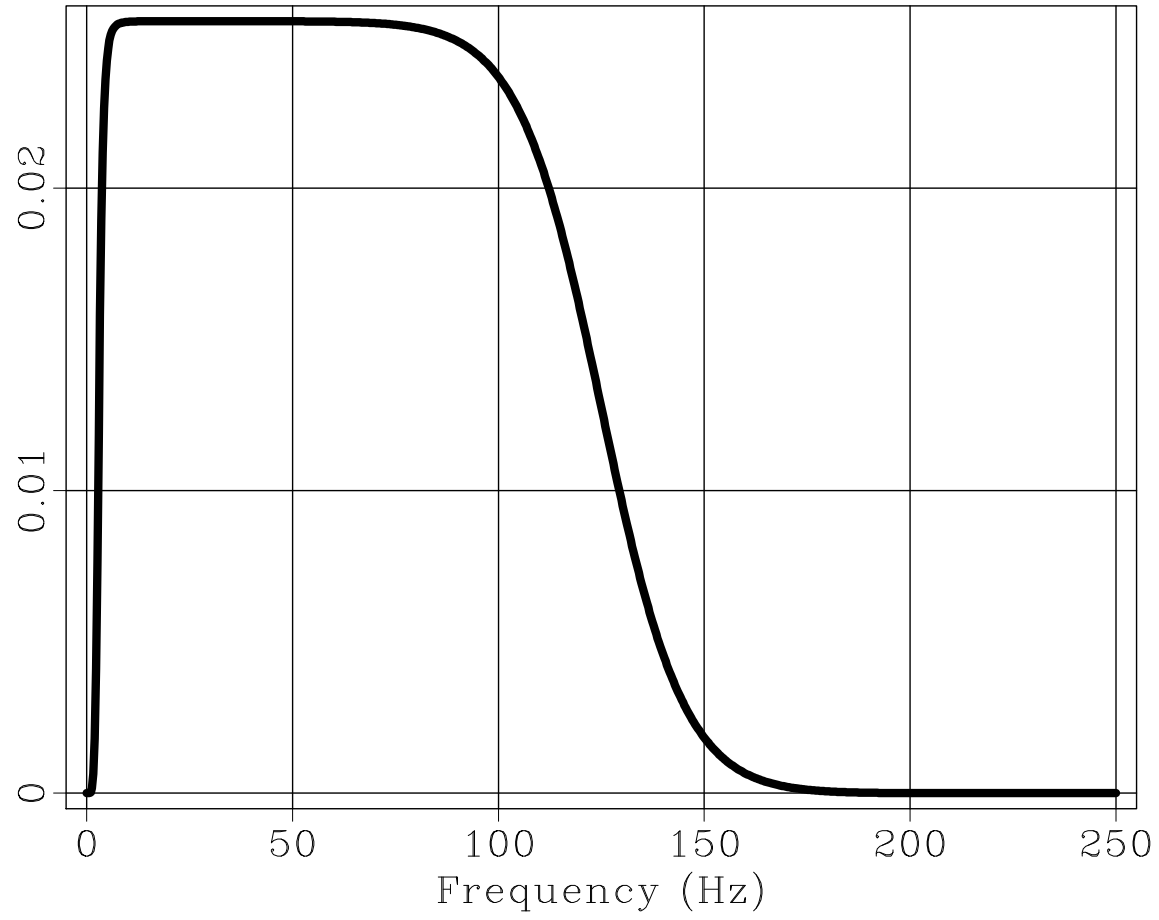


Figure 26: seismic/sbandp

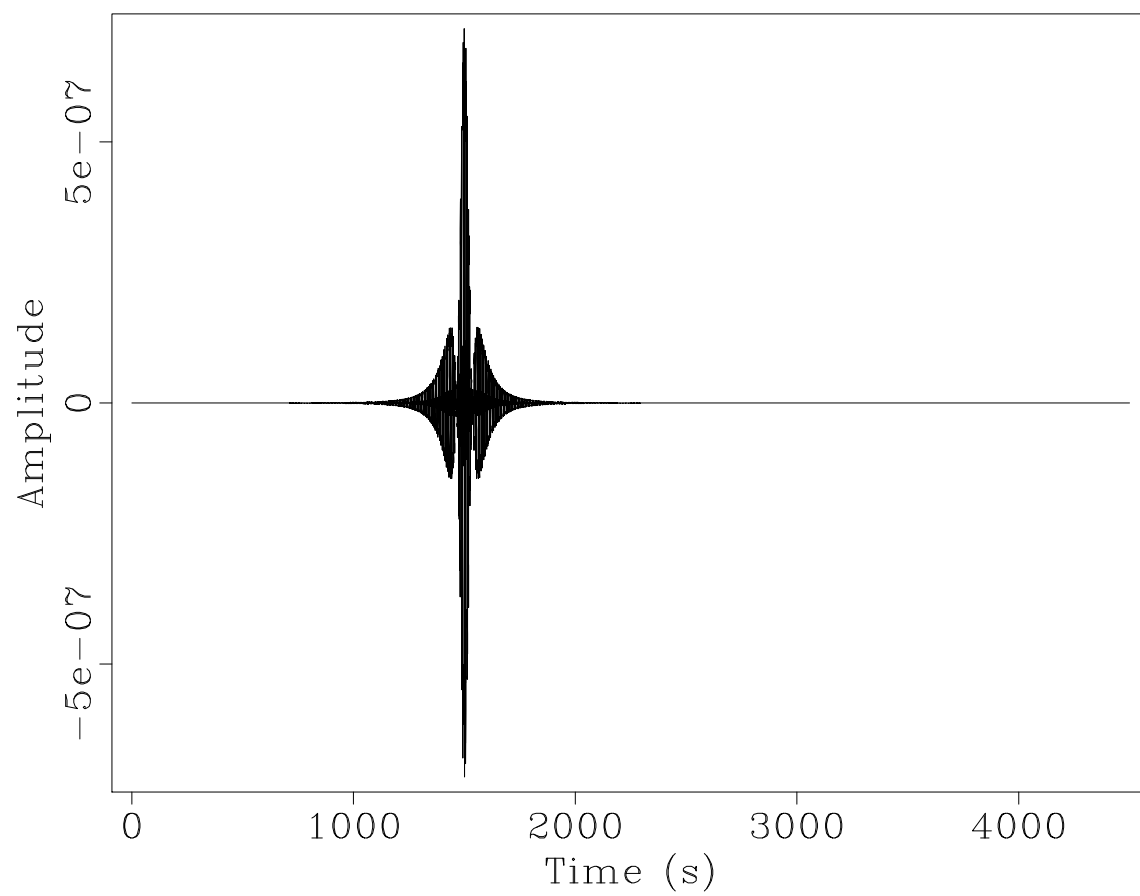
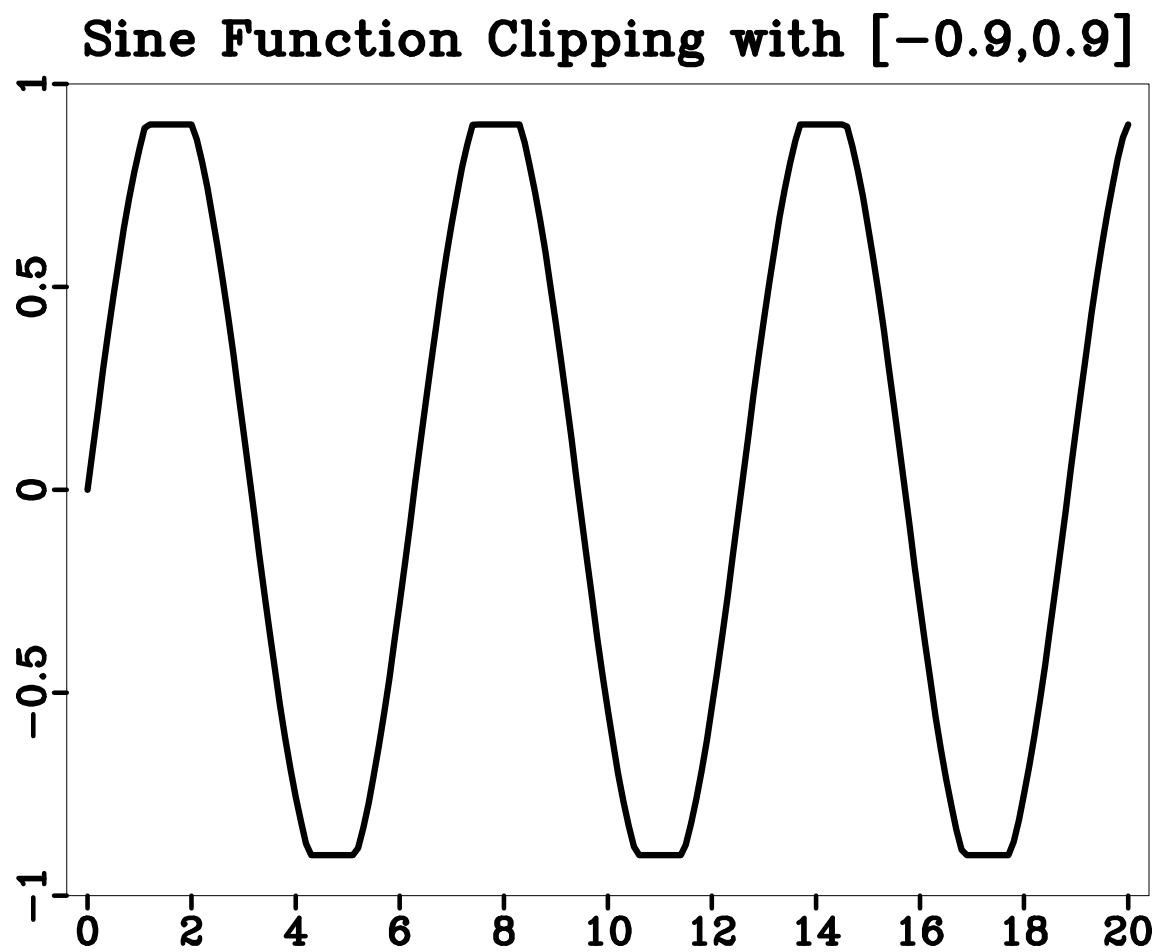
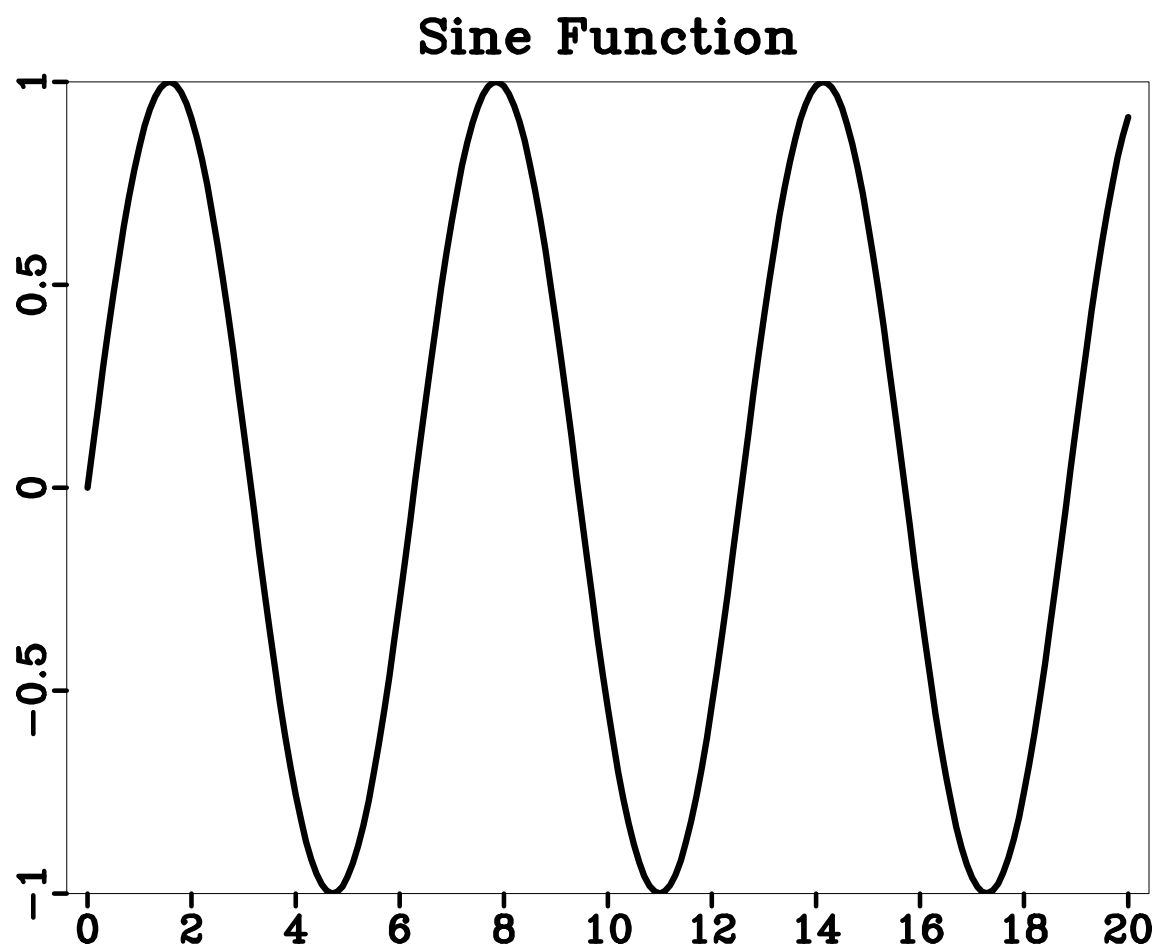
CSEM

Figure 27: csem/Ts

F90

Figure 28: $f_{90}/\text{clip1}$

Figure 29: f_{90}/sine

SEISMIC

Raw Data

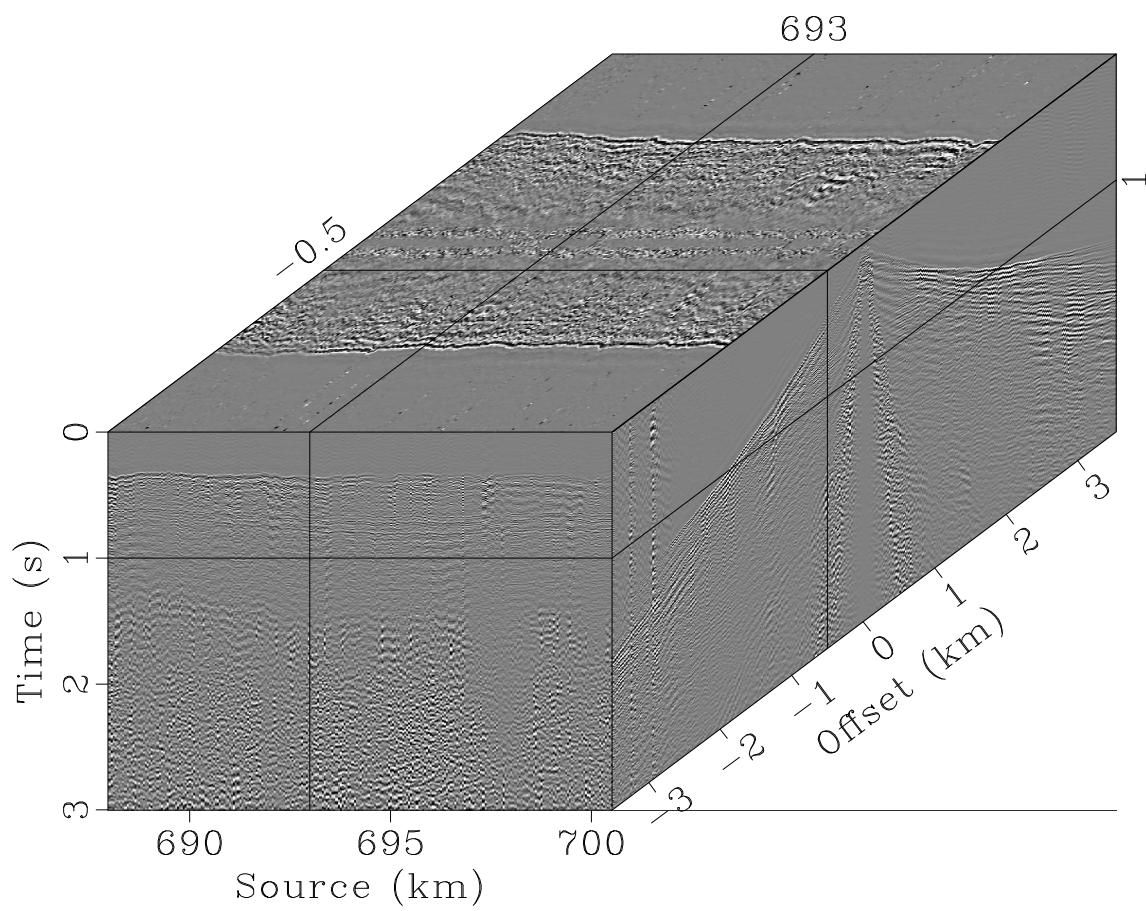


Figure 30: seismic/lines

PYTHON

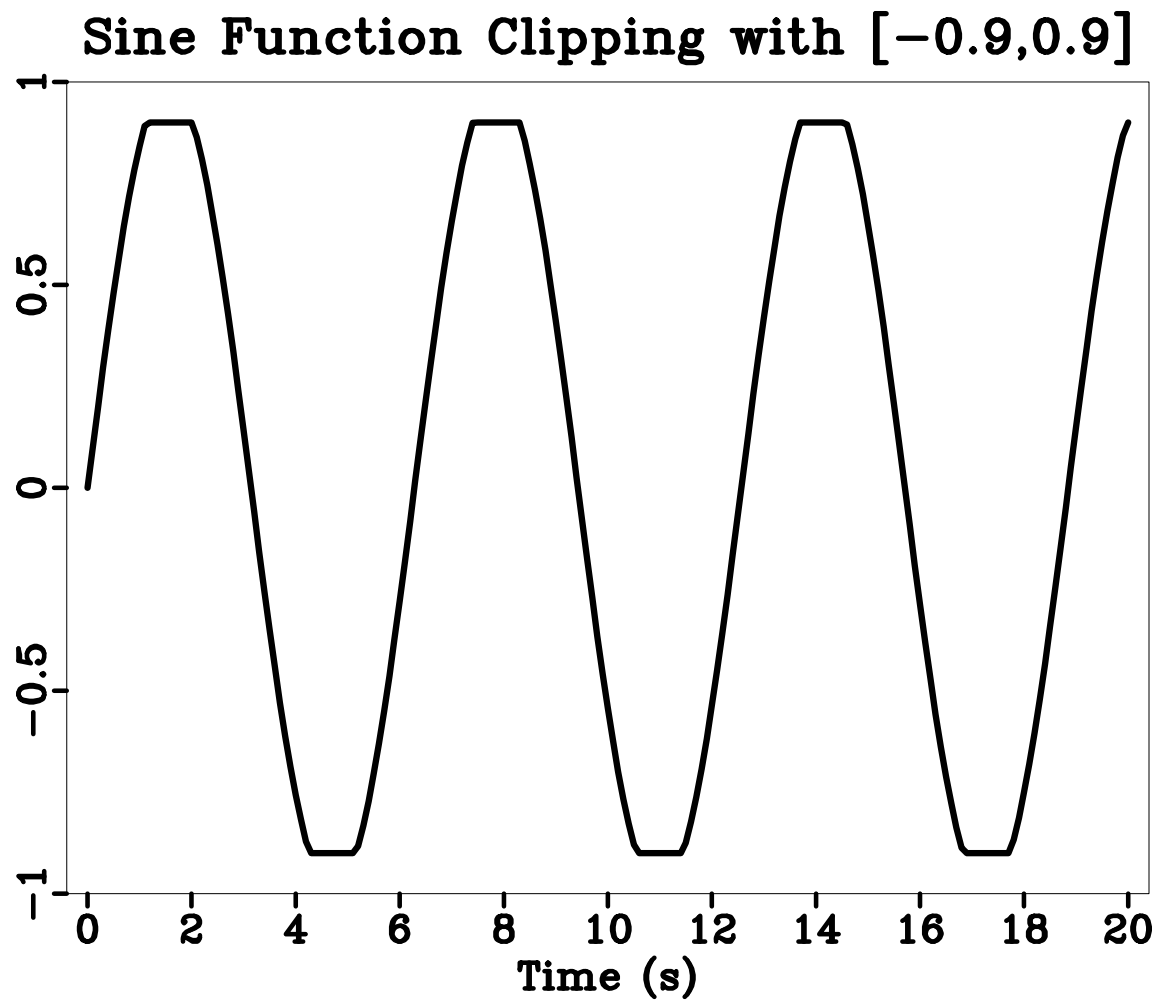


Figure 31: python/clip1

SEISMIC

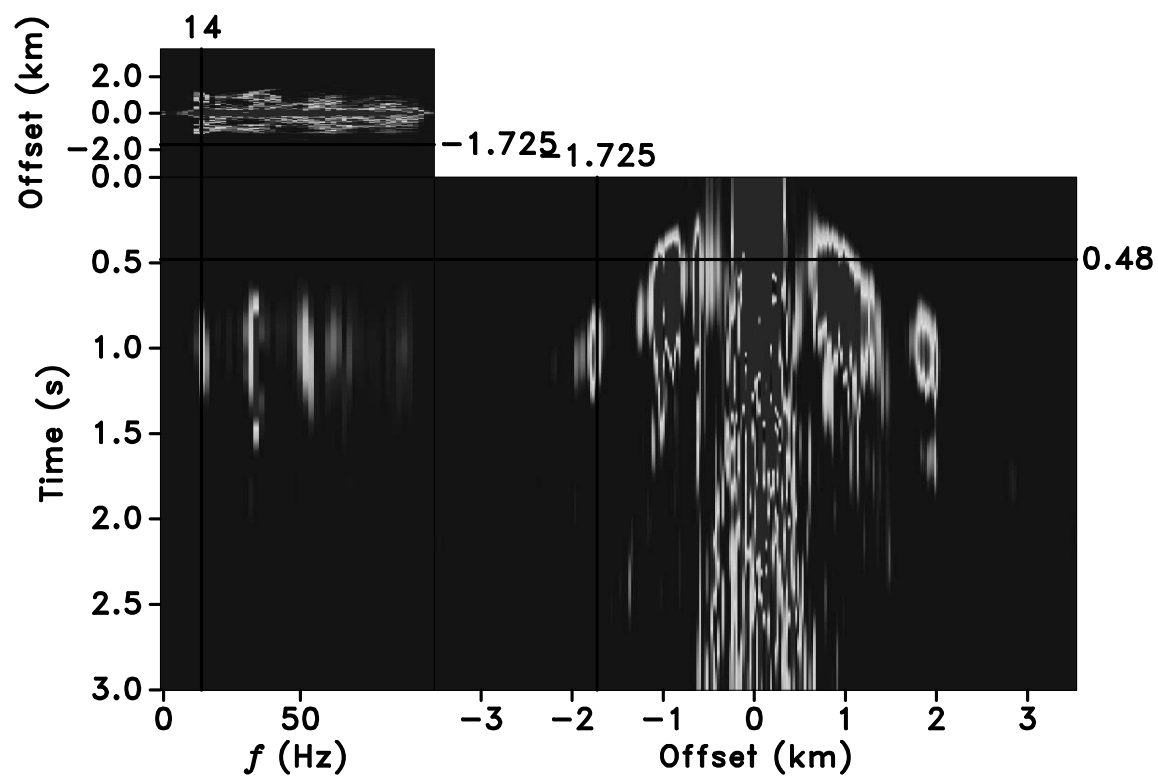


Figure 32: seismic/thr198

CMP gathers

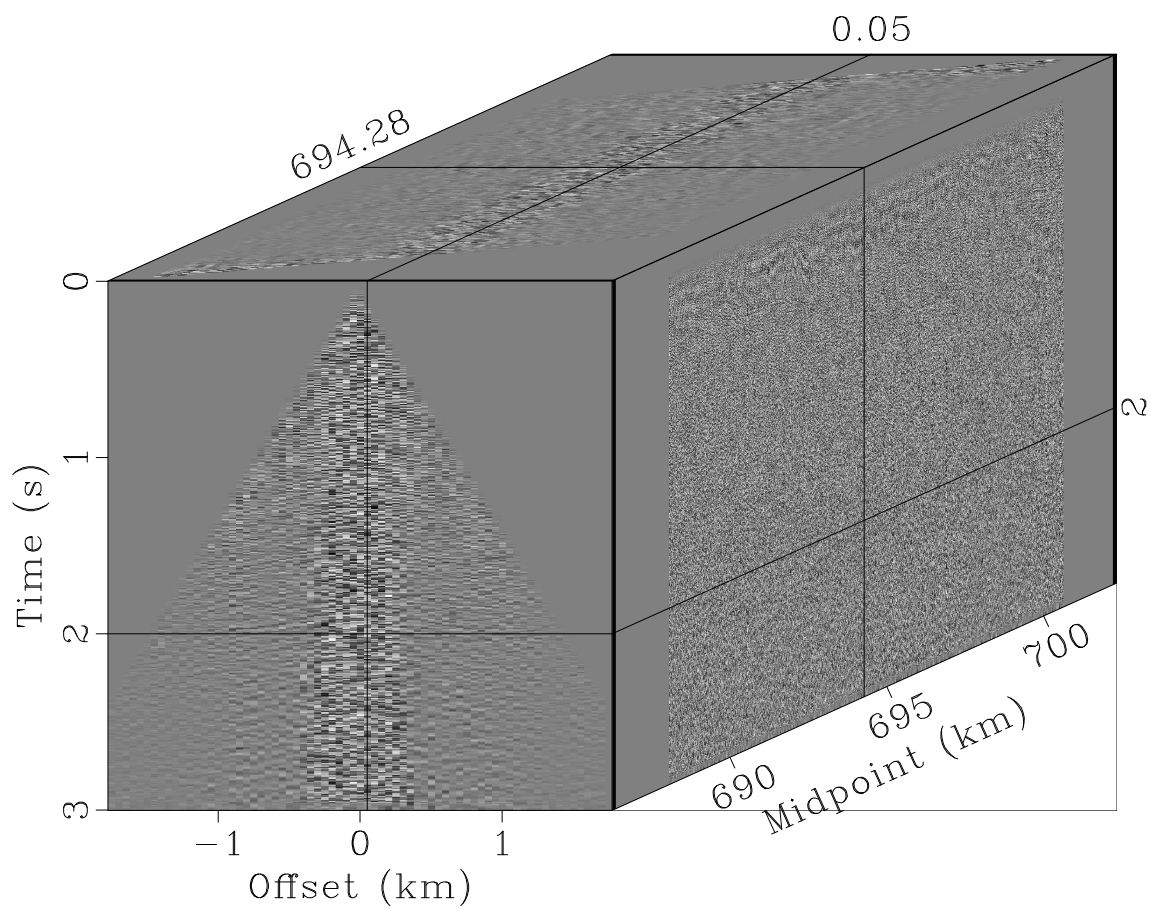


Figure 33: seismic/cmps

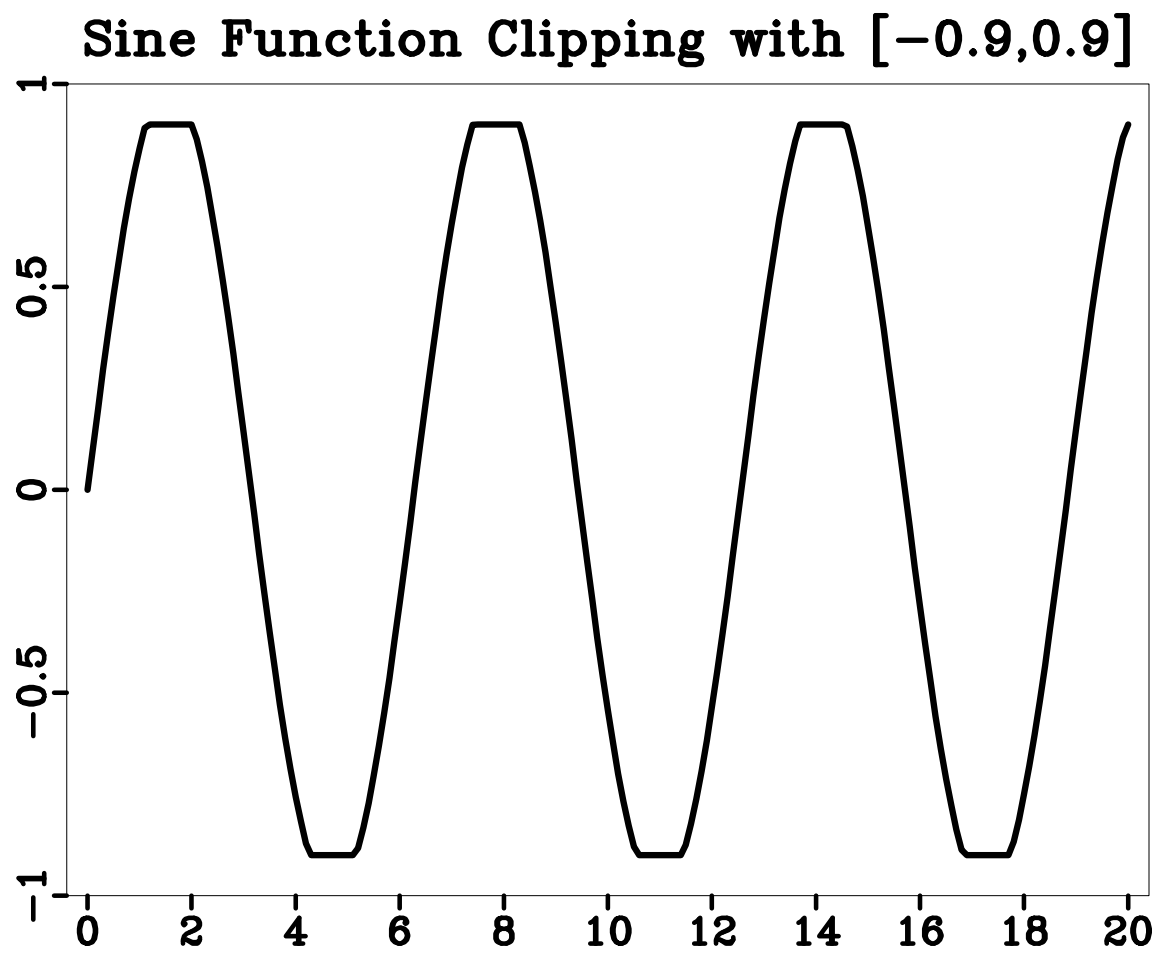


Figure 34: c/clip1

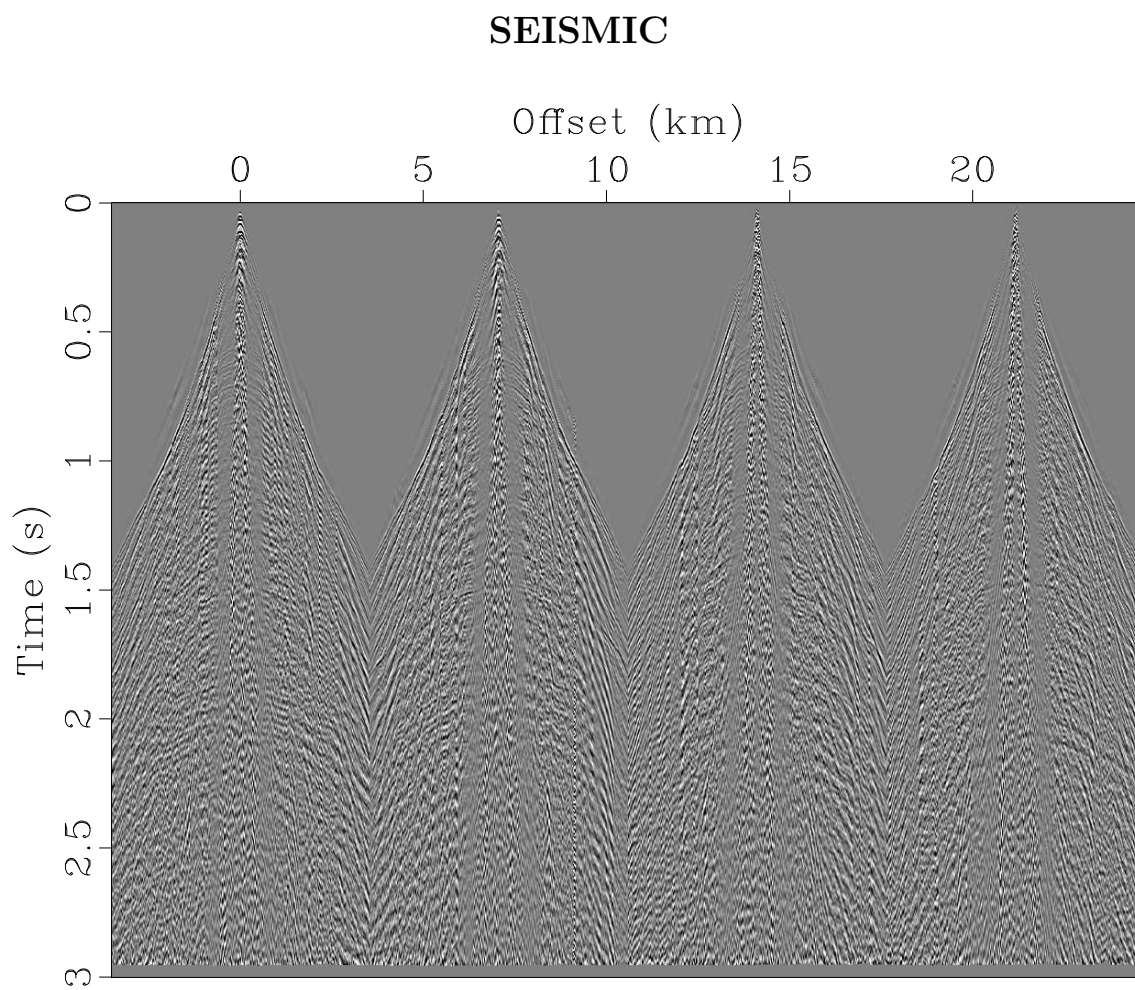


Figure 35: seismic/outmute

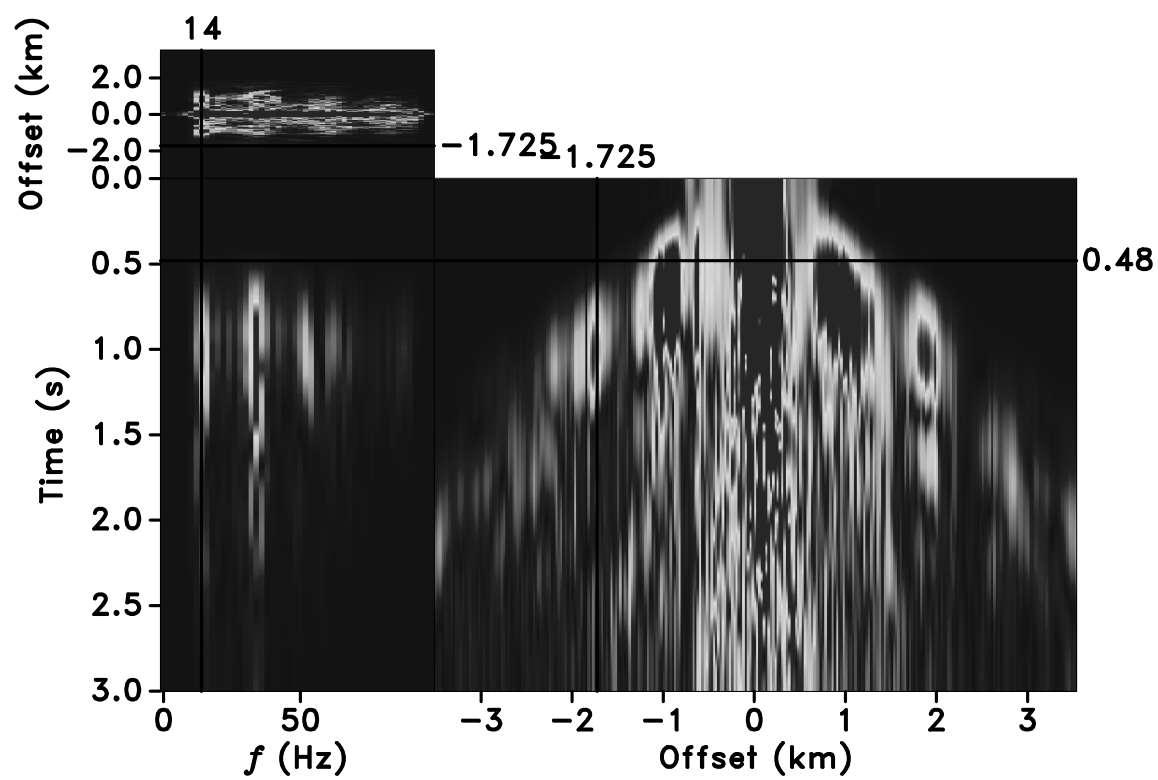


Figure 36: seismic/ltft198

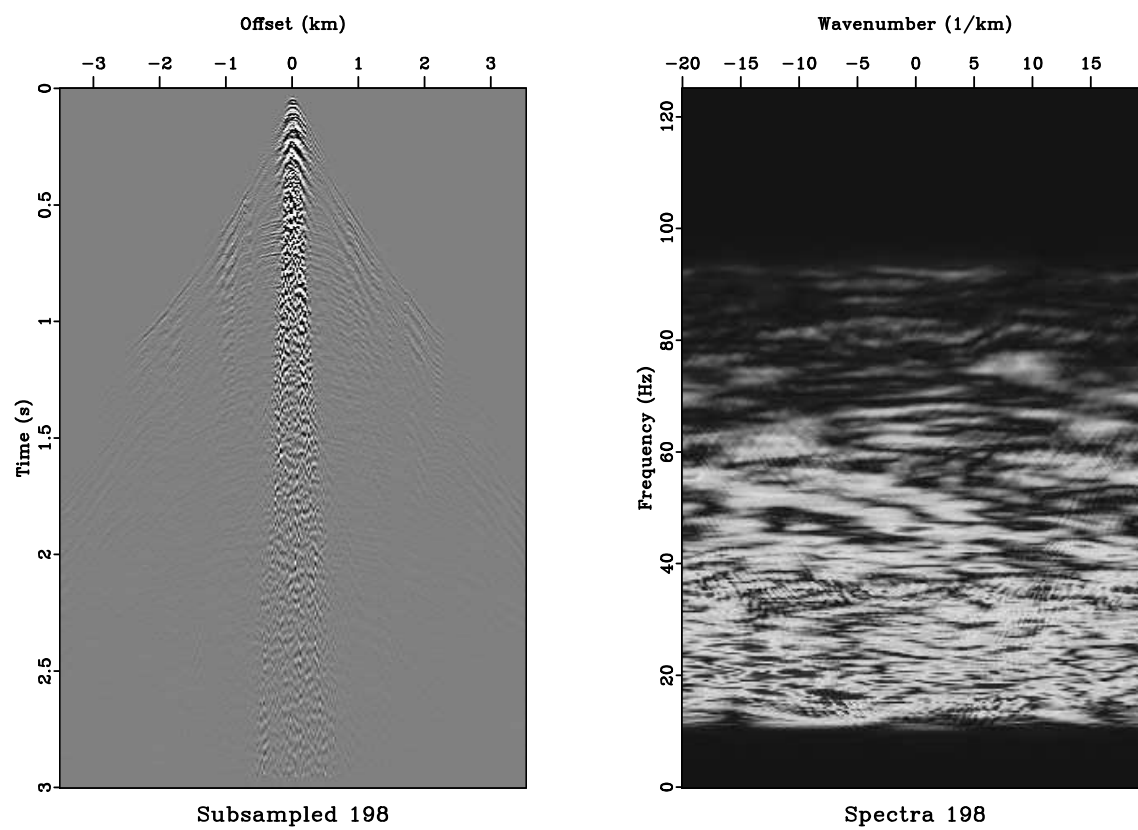


Figure 37: seismic/output198

GRAVITY

Location

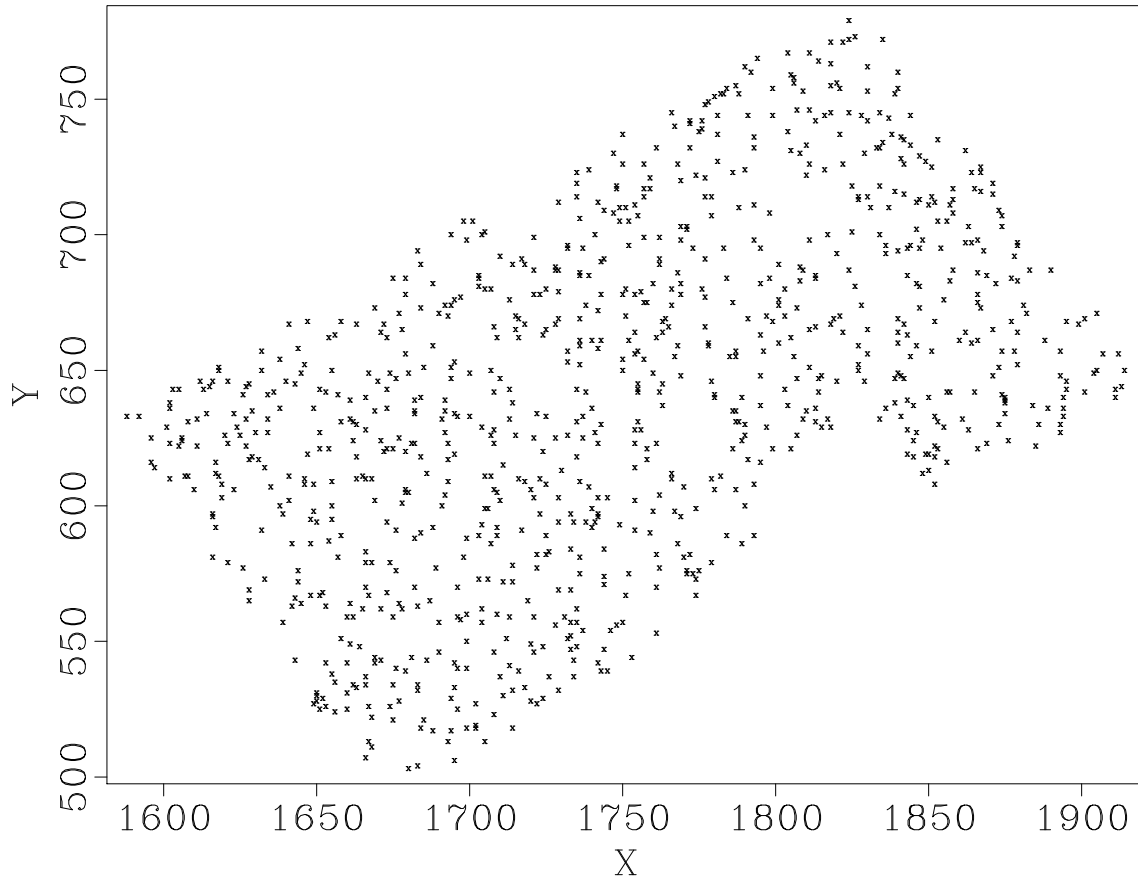


Figure 38: gravity/location

F90

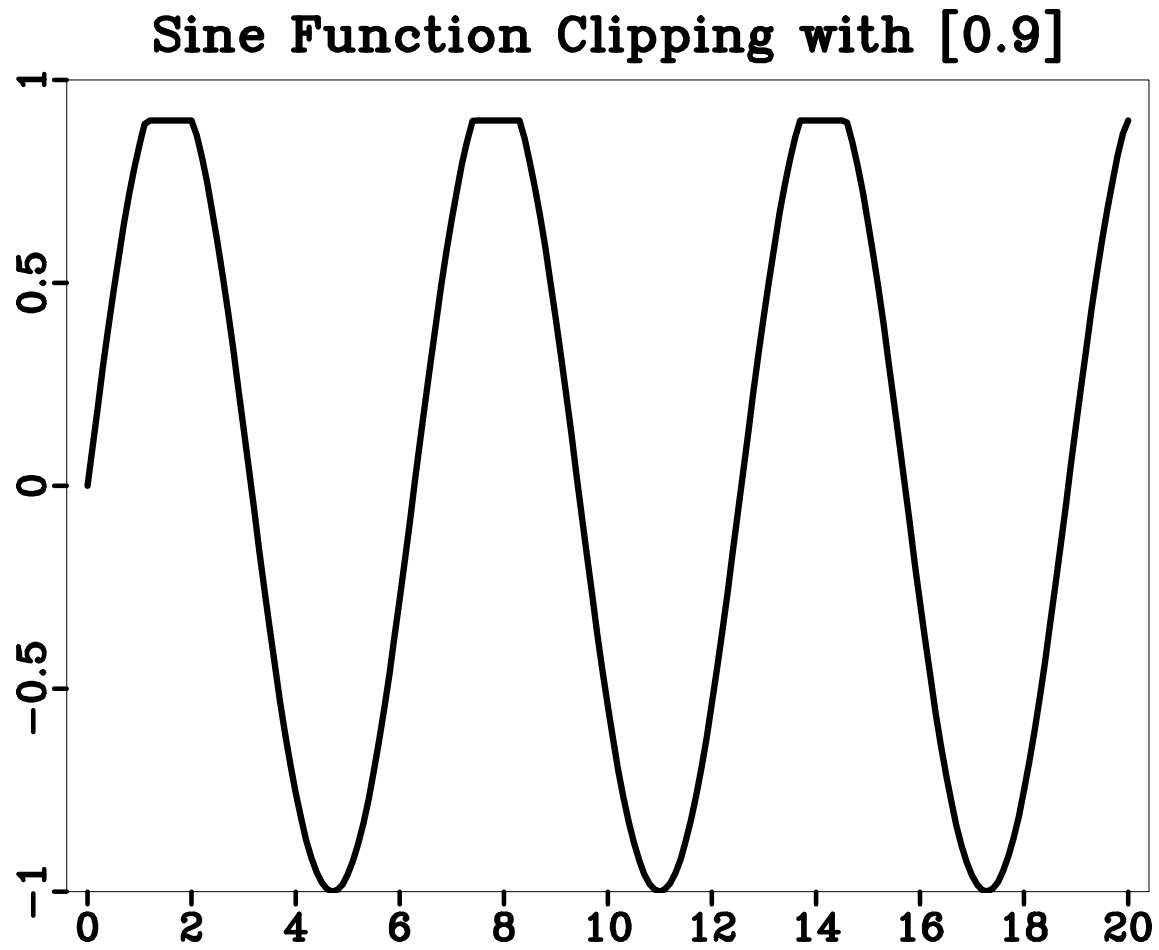


Figure 39: f90/clip2

SEISMIC

NMOed Data

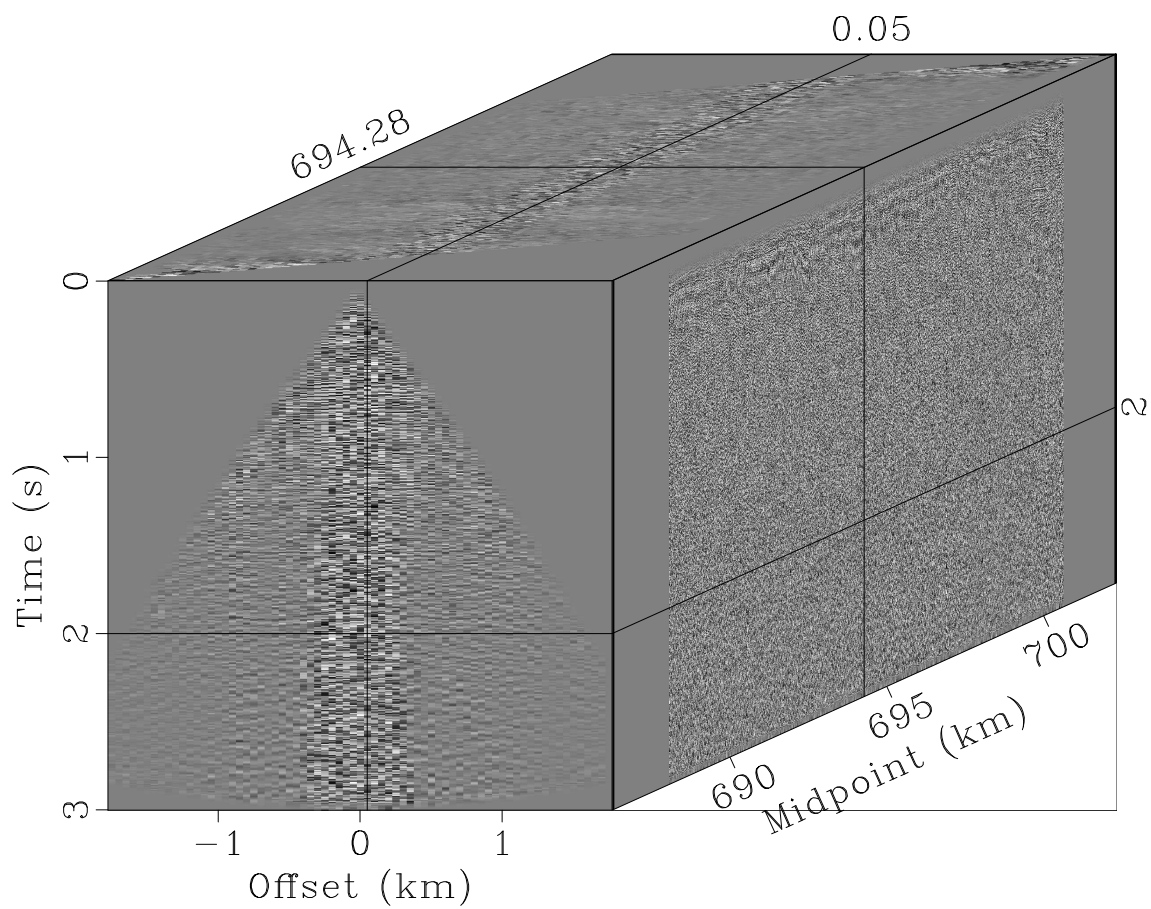
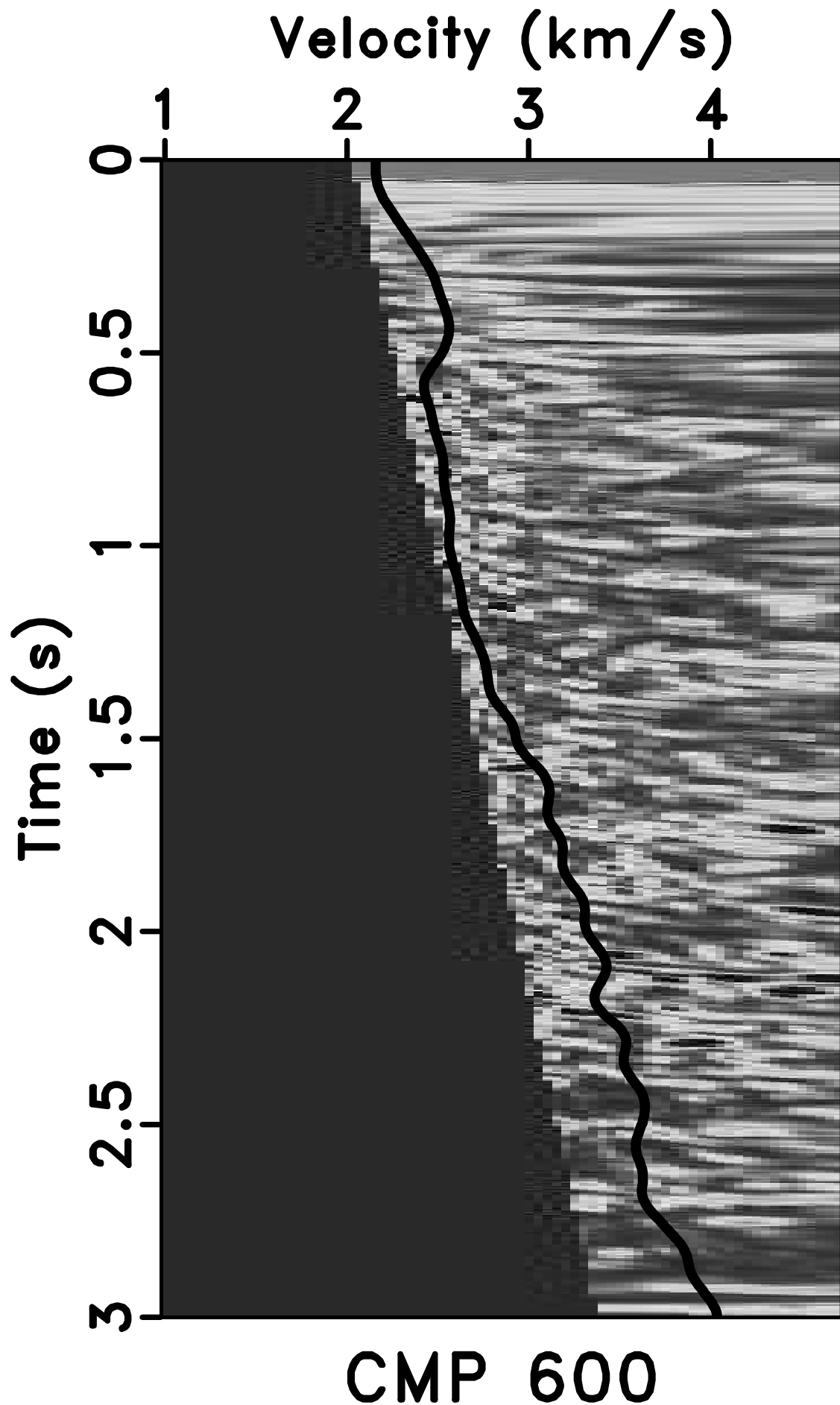


Figure 40: seismic/nmo



PYTHON

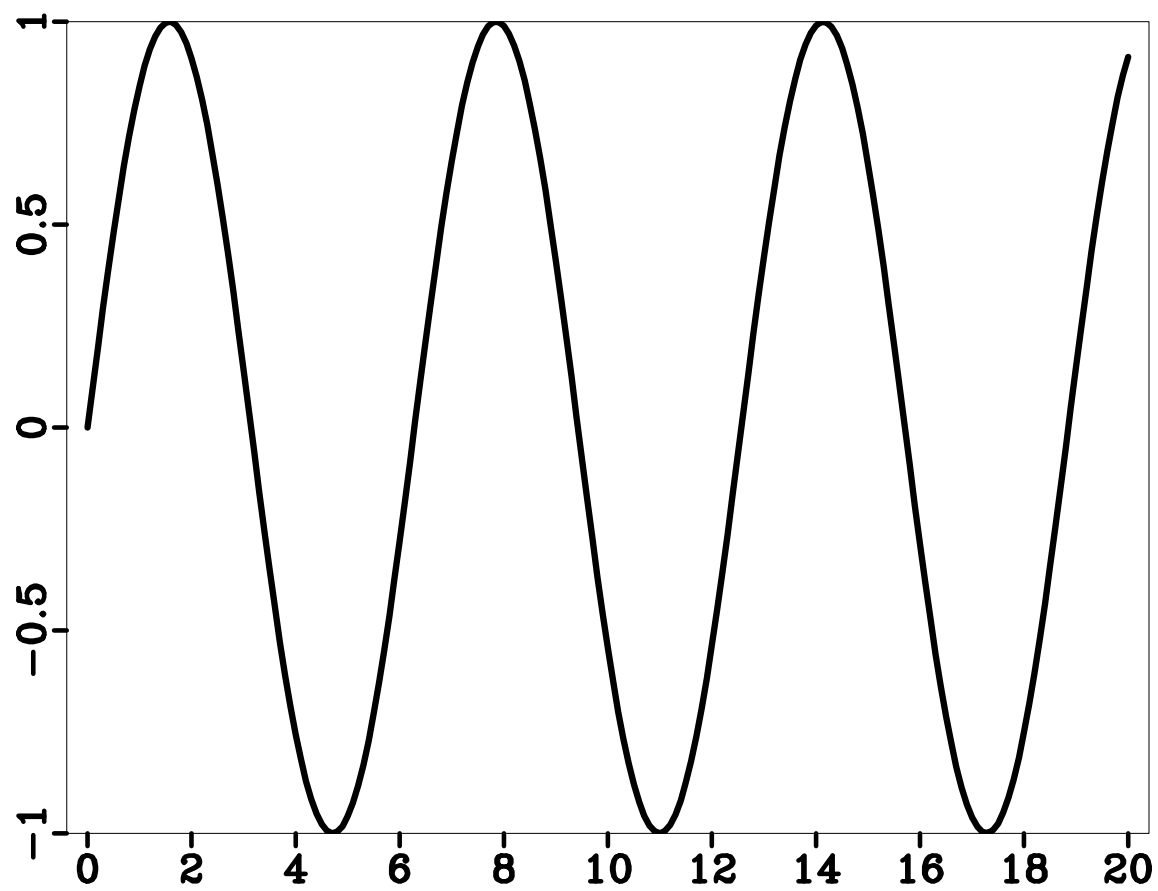
Sine Function

Figure 42: python/sine

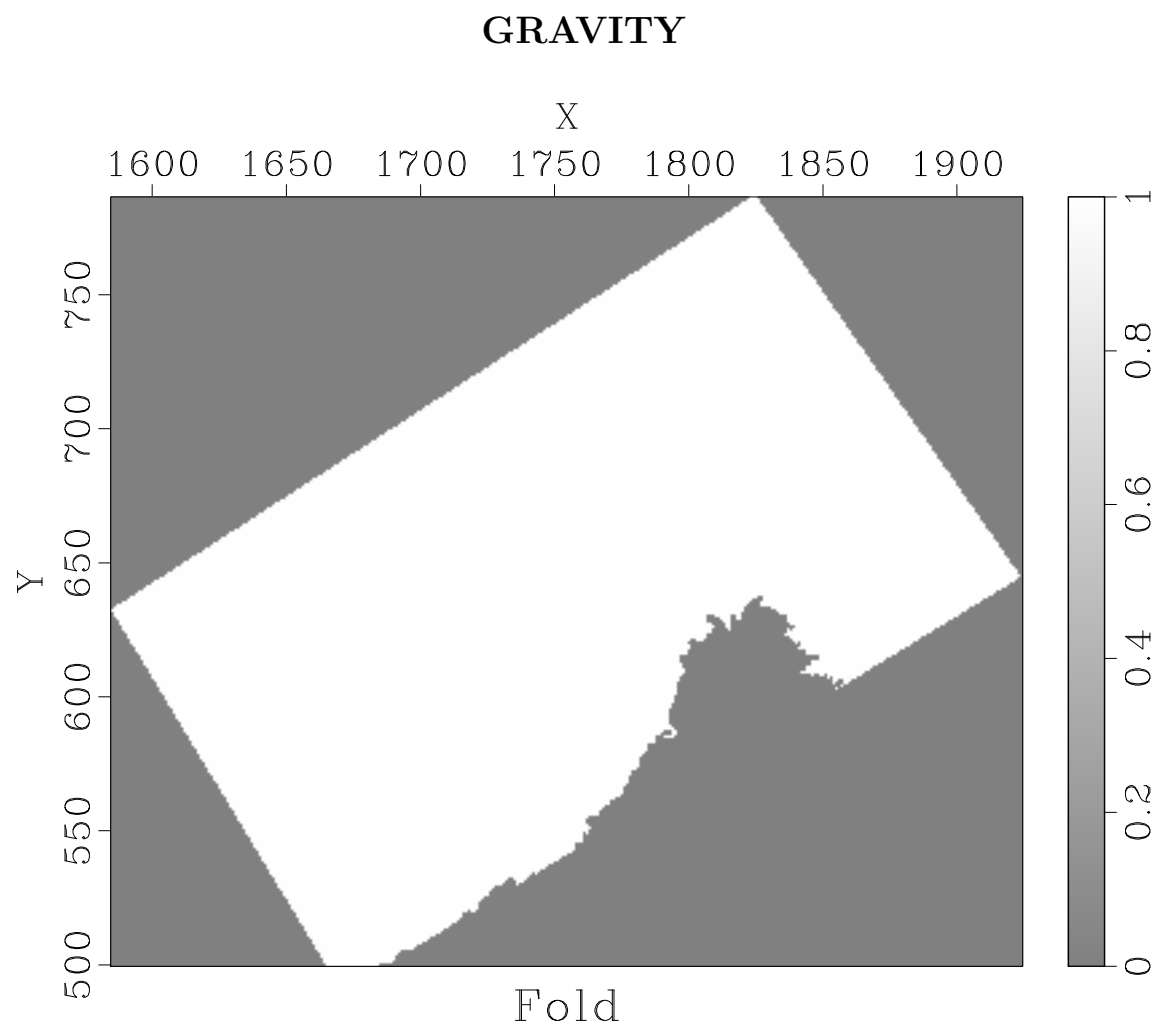


Figure 43: gravity/fold

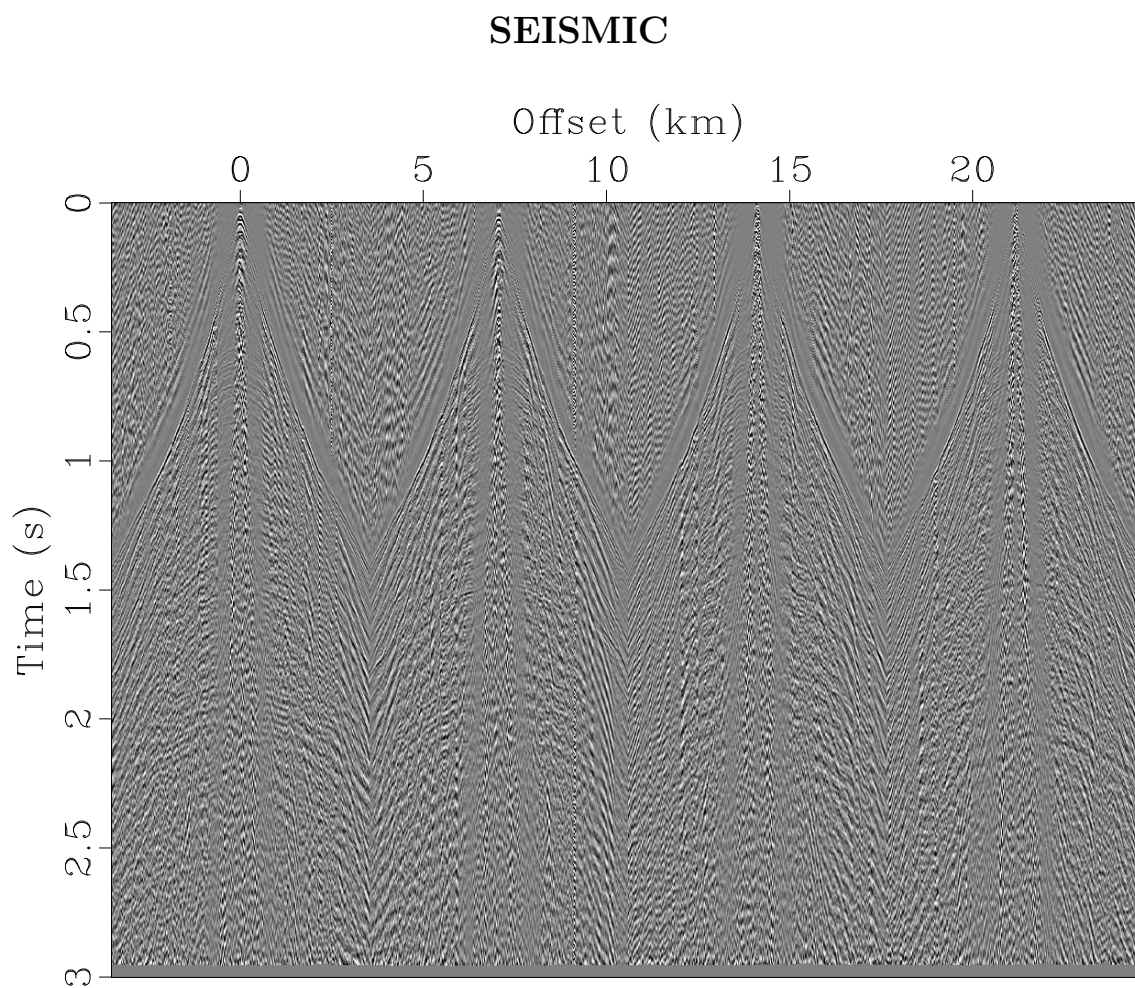


Figure 44: seismic/inpmute

C++

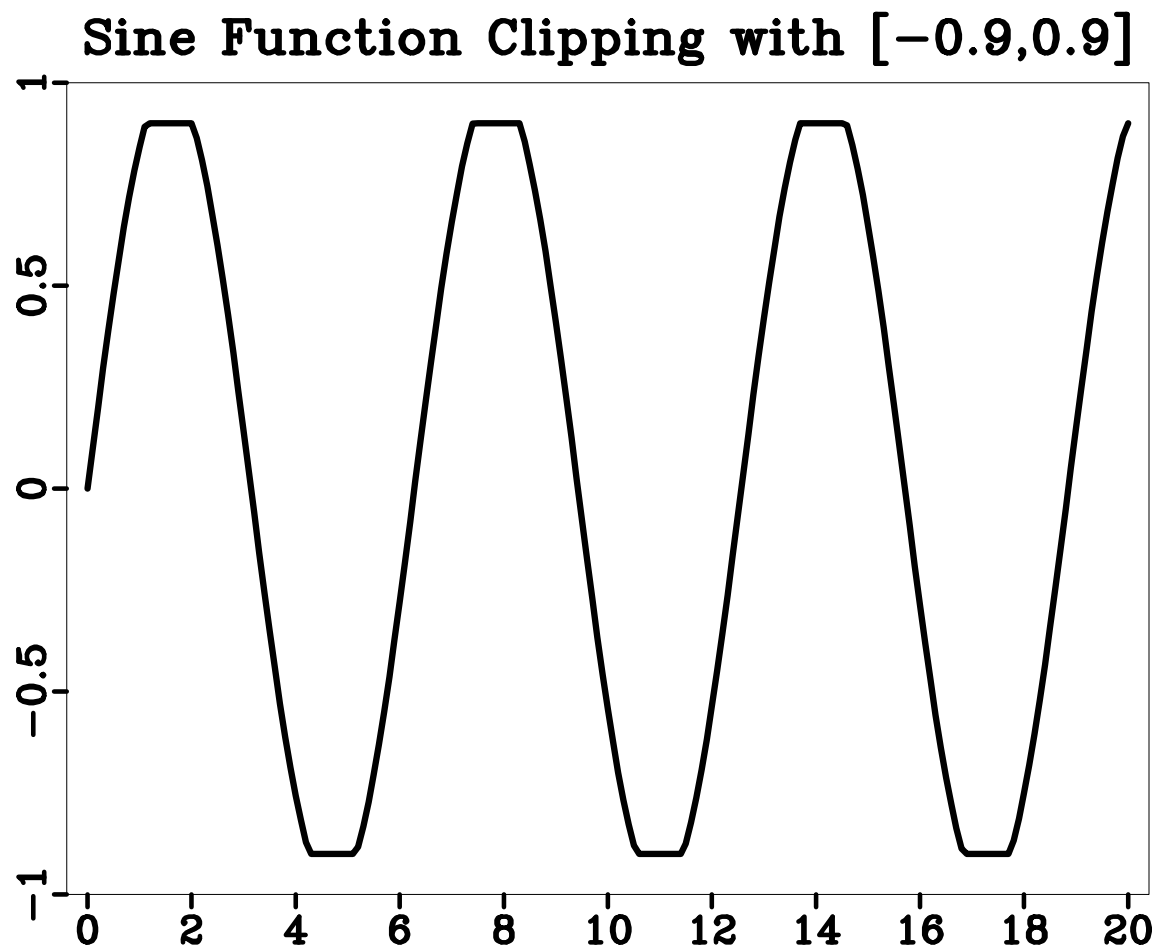


Figure 45: c++/clip1

SEISMIC

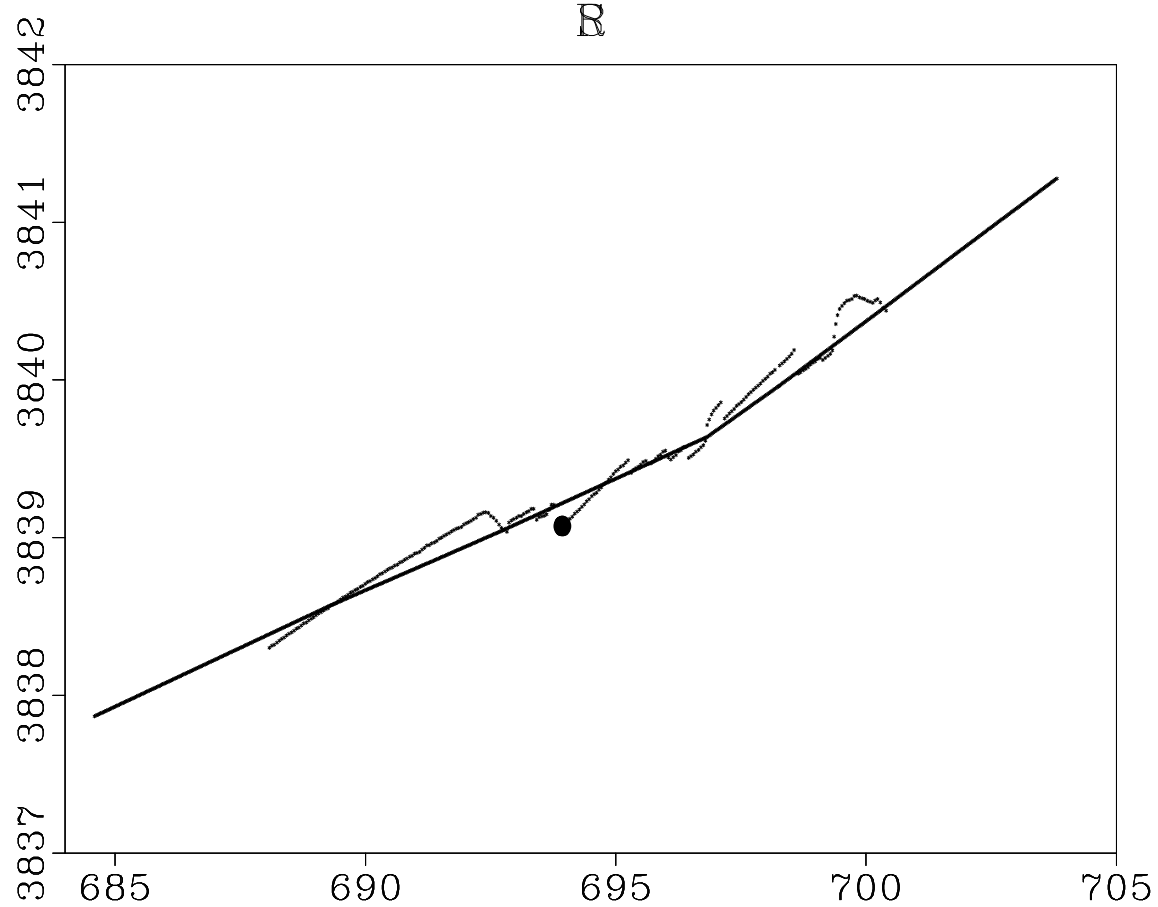
 R 

Figure 46: seismic/SRO

CMPs

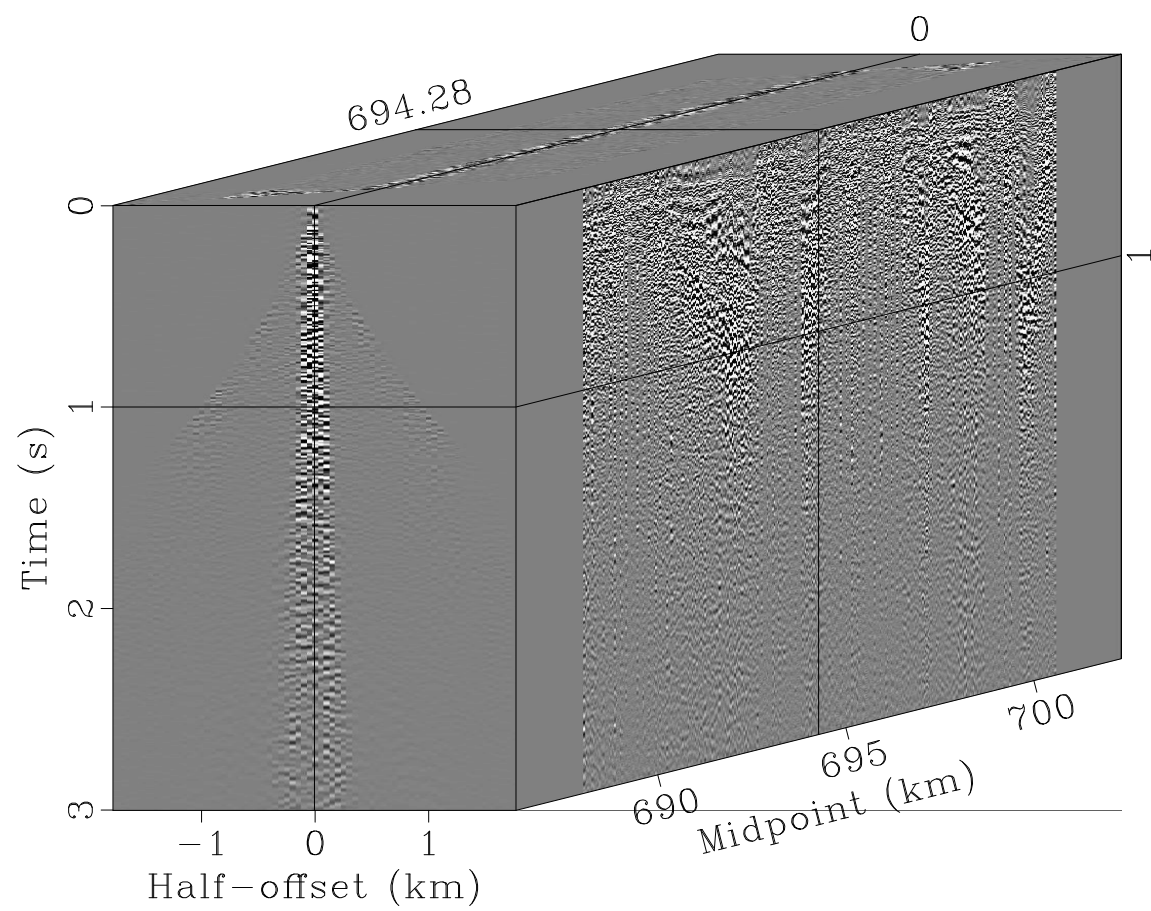


Figure 47: seismic/rcmps

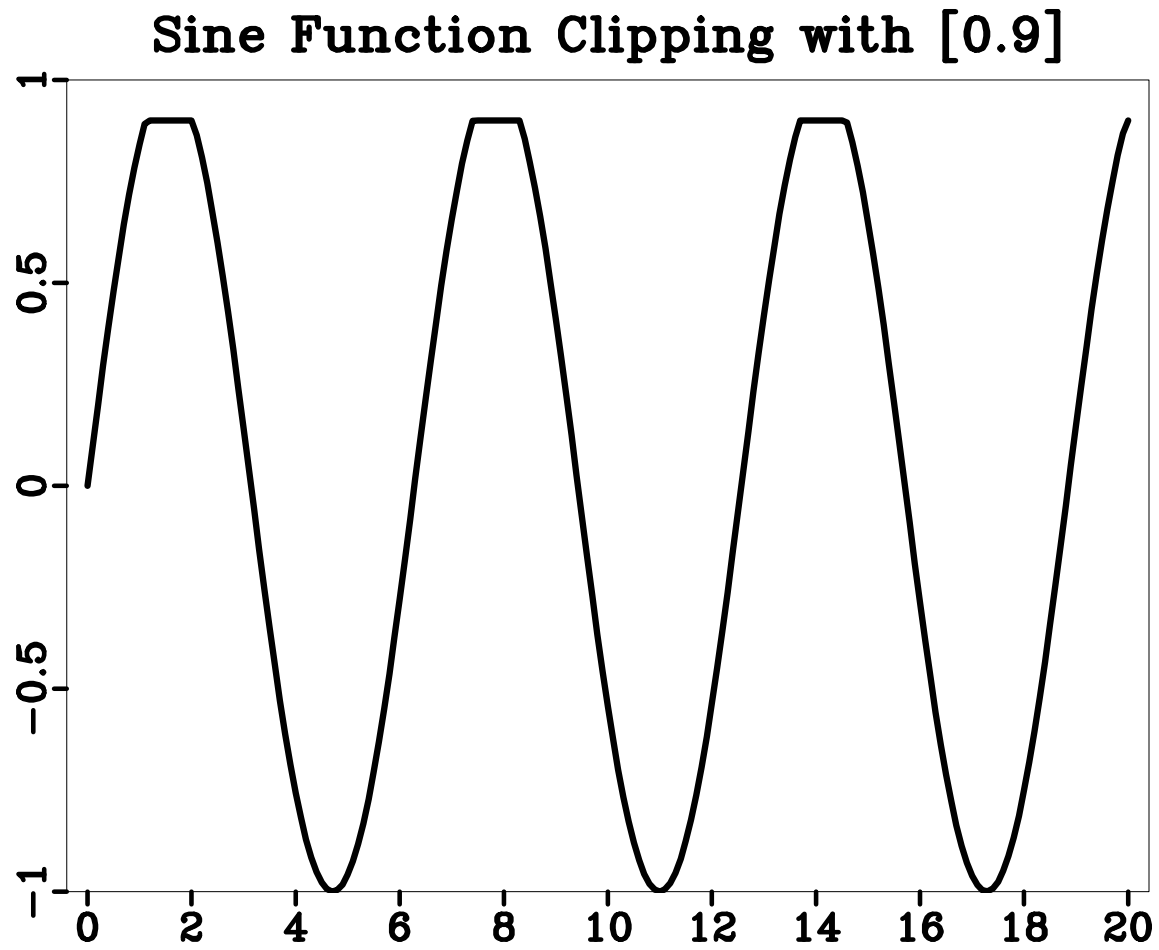


Figure 48: c/clip2

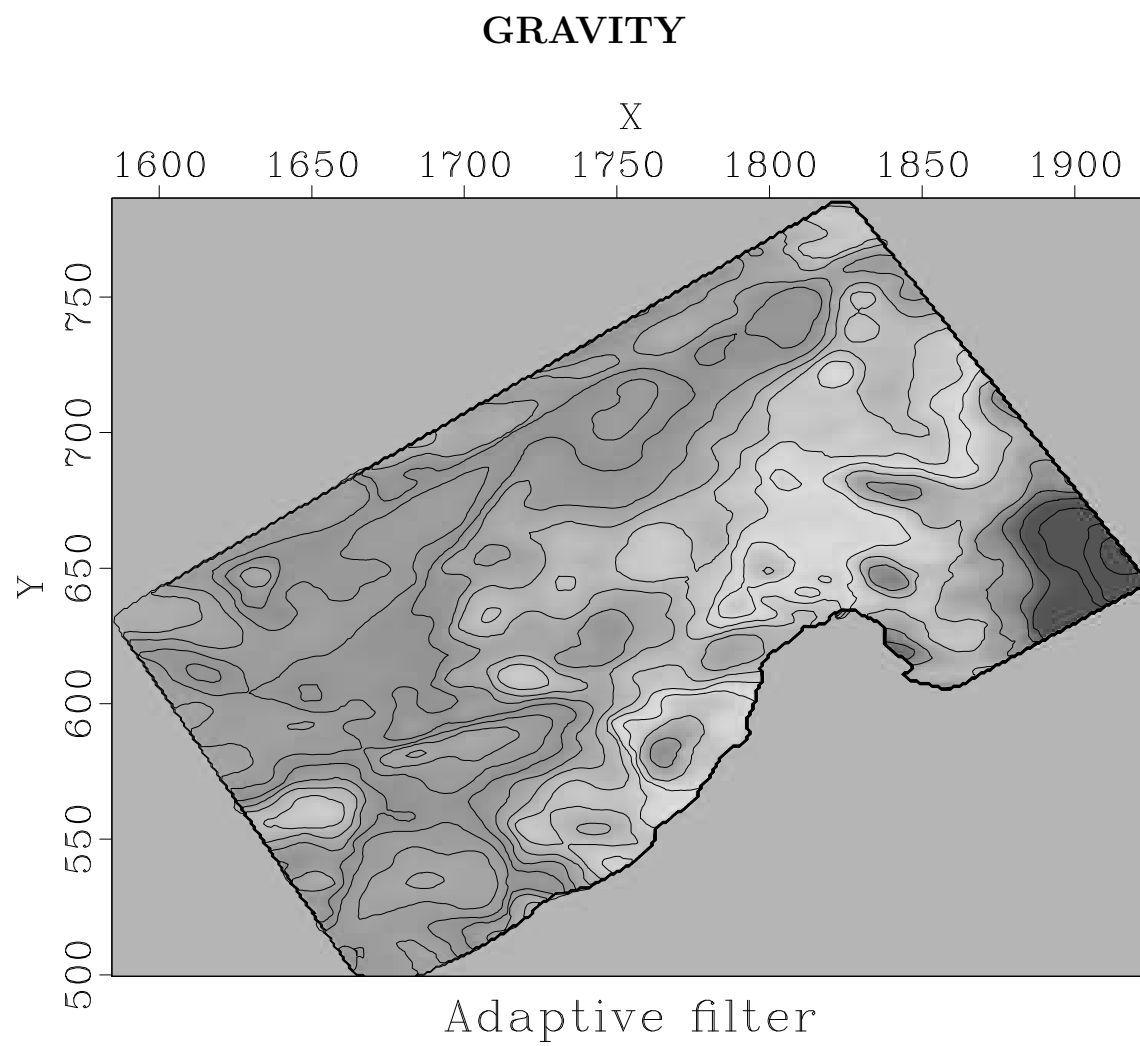


Figure 49: gravity/mtm

SEISMIC

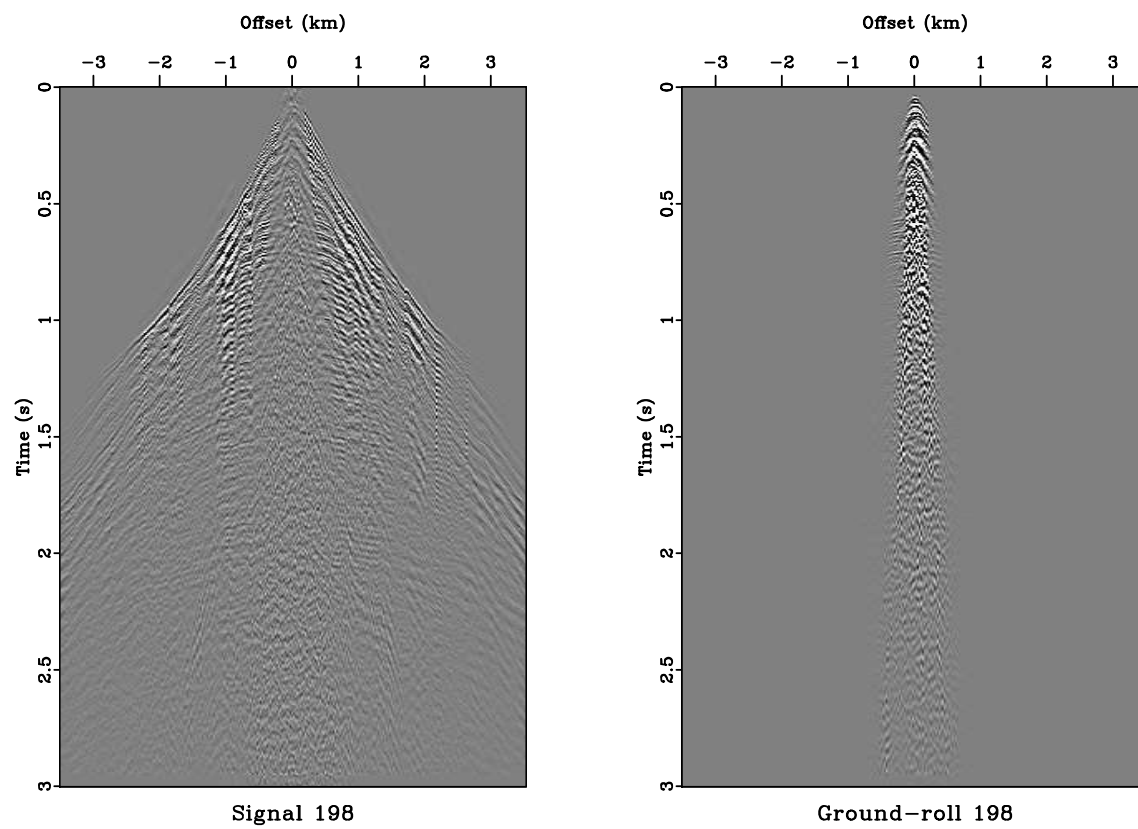


Figure 50: seismic/sn198