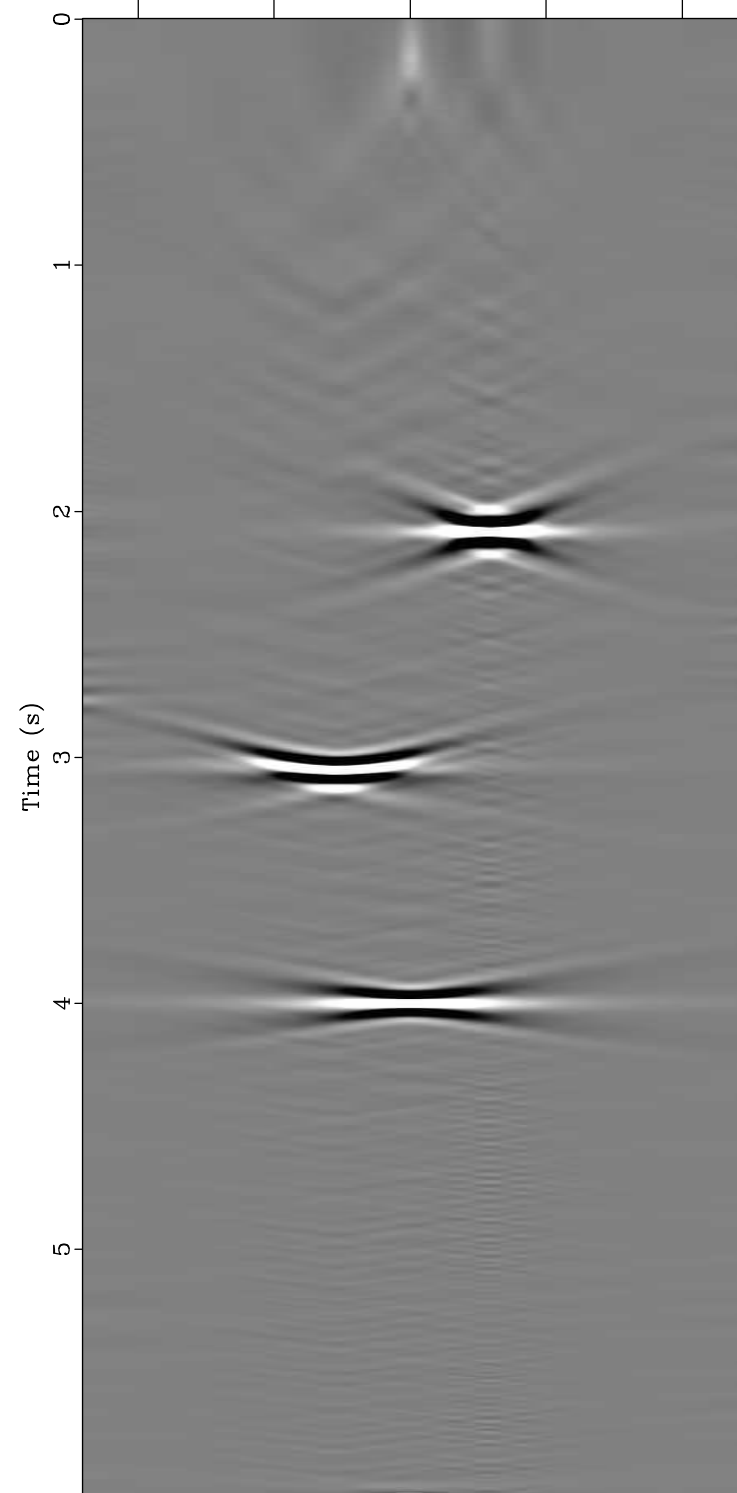


Slope (s^2/km)

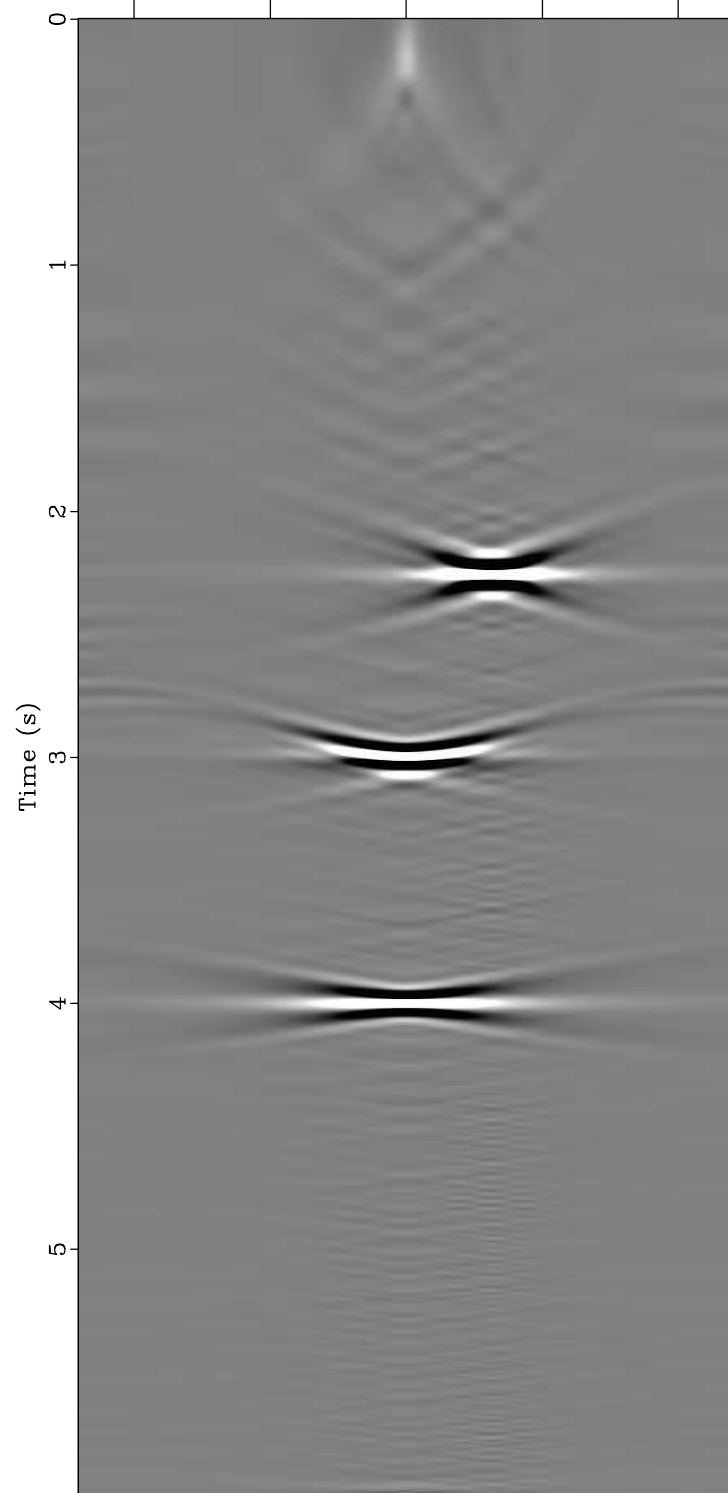
-10 -5 0 5 10



Dip Angle Gather ($x=0.25$ km, $v=0.5$ km/s)

Slope (s^2/km)

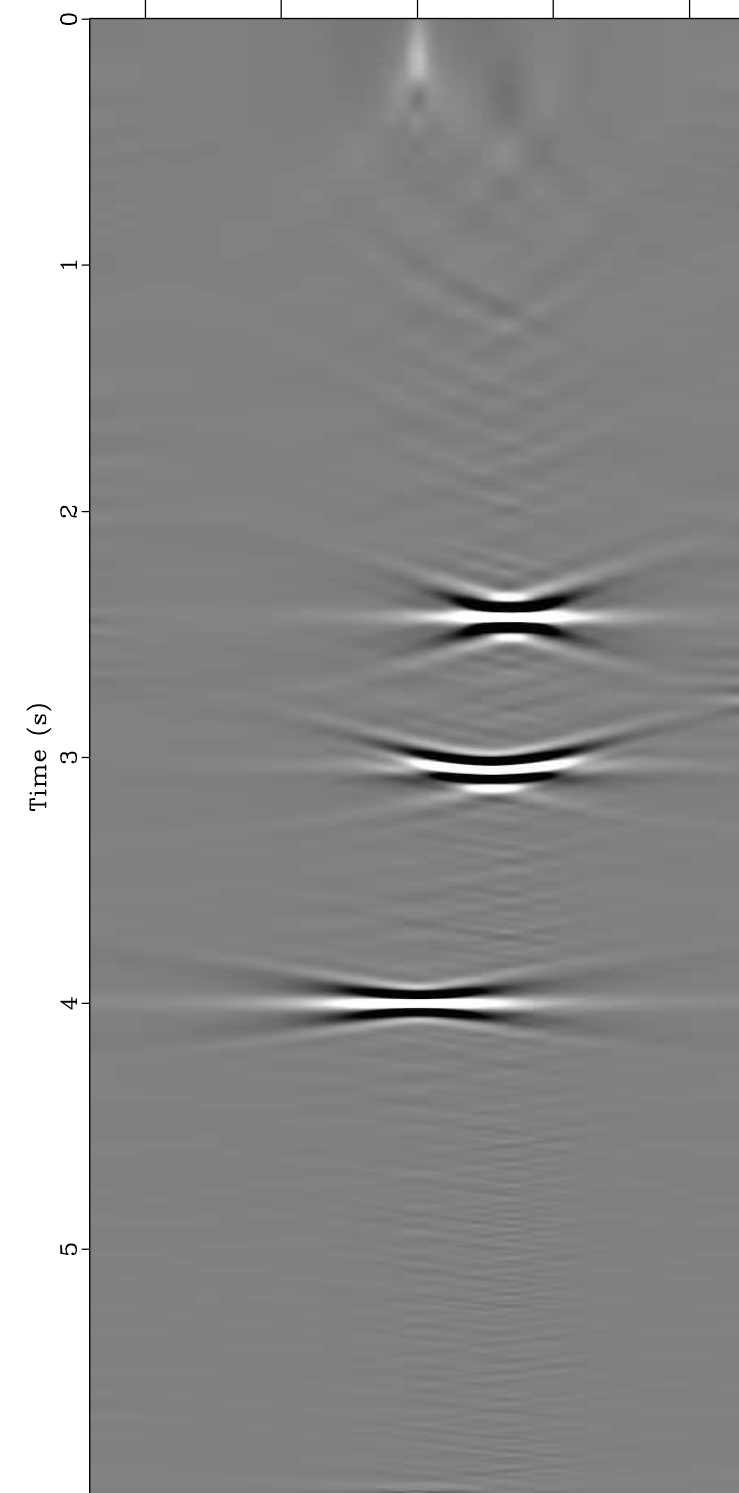
-10 -5 0 5 10



Dip Angle Gather ($x=0.5$ km, $v=0.5$ km/s)

Slope (s^2/km)

-10 -5 0 5 10



Dip Angle Gather ($x=0.75$ km, $v=0.5$ km/s)