

Slope ( $s^2/km$ )

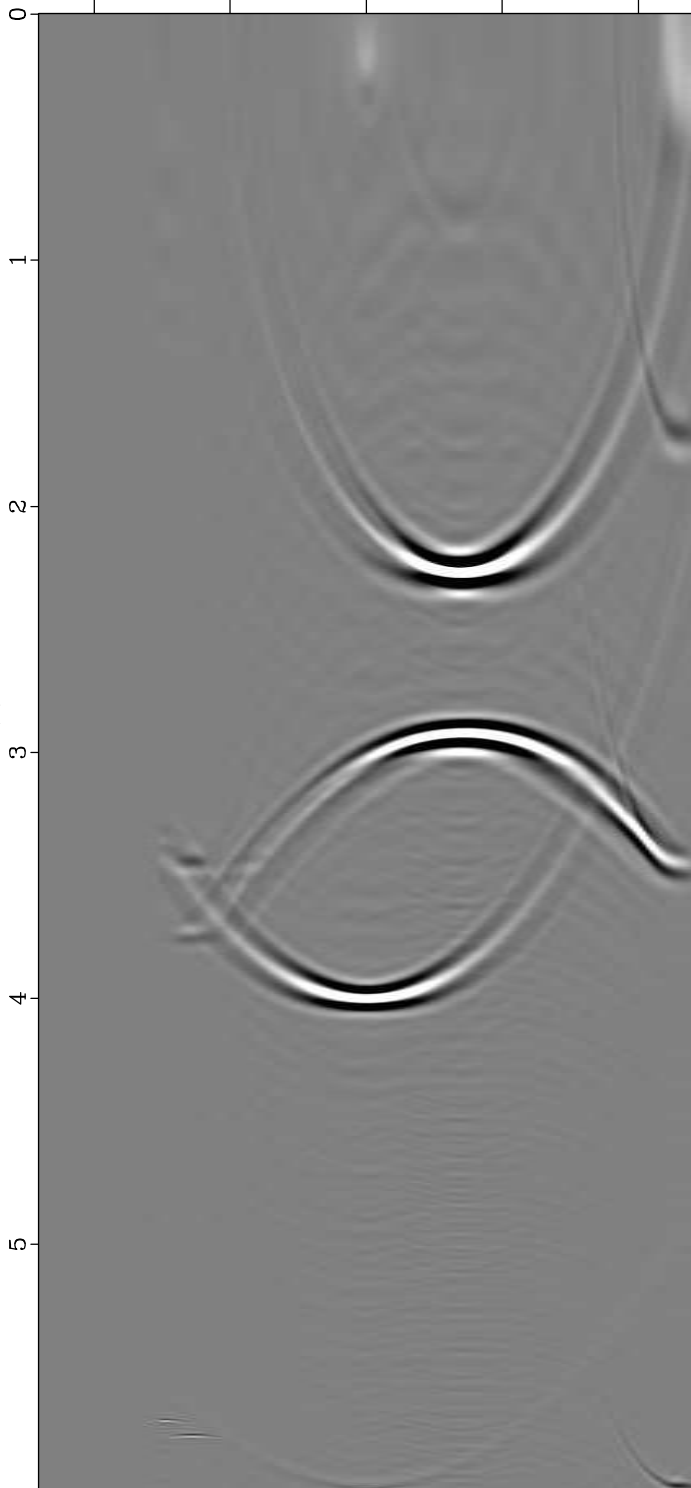
Slope ( $s^2/km$ )

Slope ( $s^2/km$ )

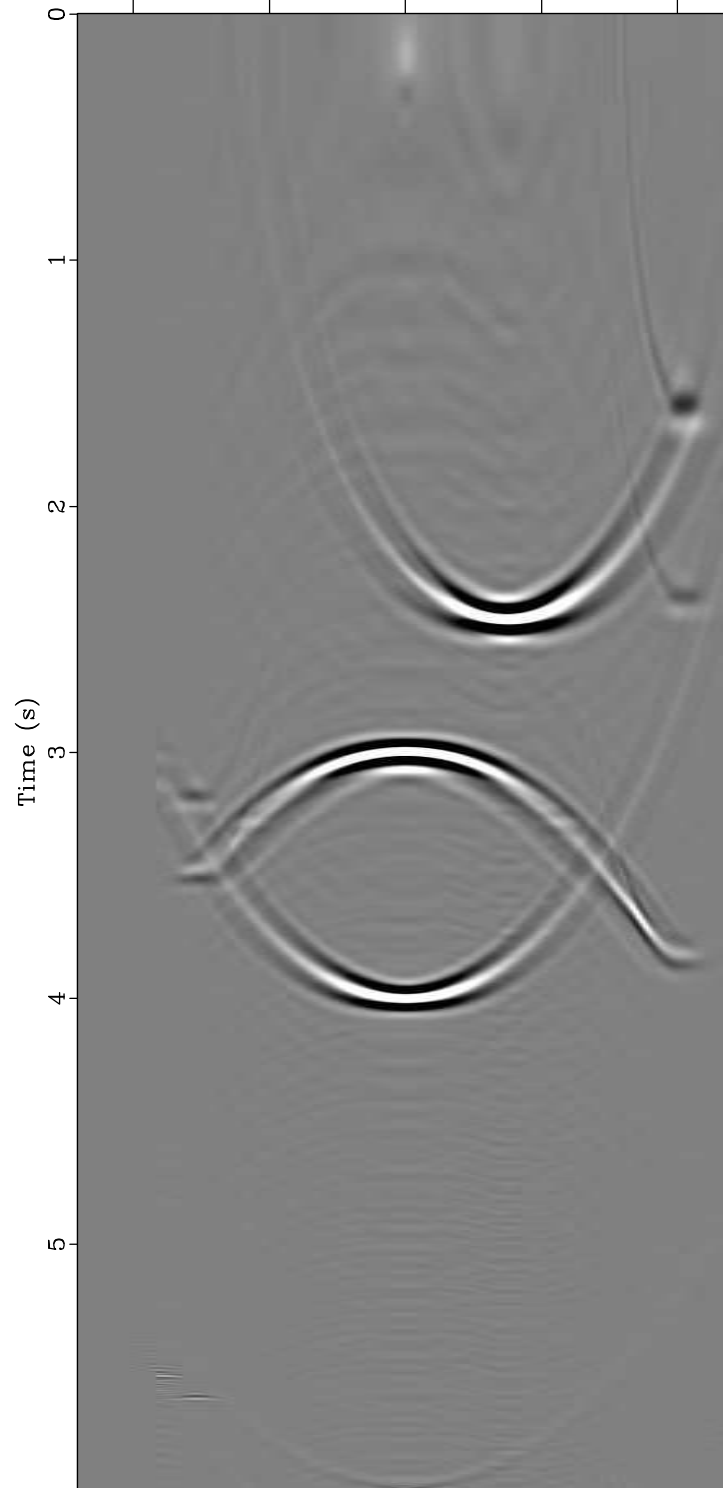
-10 -5 0 5 10

-10 -5 0 5 10

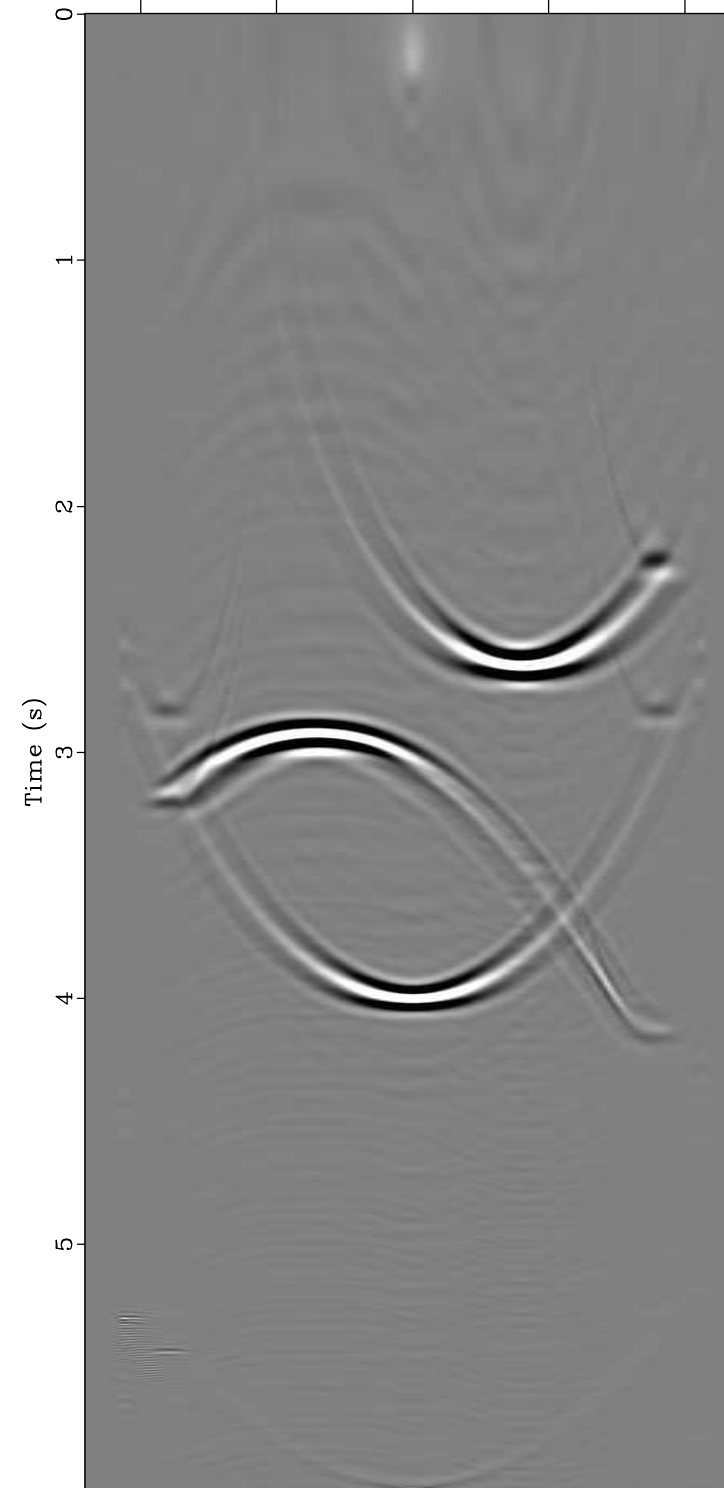
-10 -5 0 5 10



Dip Angle Gather ( $x=0.25$  km,  $v=1.25$  km/s)



Dip Angle Gather ( $x=0.5$  km,  $v=1.25$  km/s)



Dip Angle Gather ( $x=0.75$  km,  $v=1.25$  km/s)